



OUR GLOBAL
COMPETENCE
CENTRES

 APOLLO DISPLAY
TECHNOLOGIES



 DISTEC



 DISPLAY
TECHNOLOGY

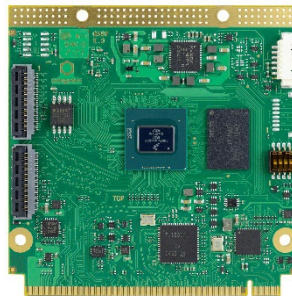


Datasheet

Congatec

conga-QMX8-Plus

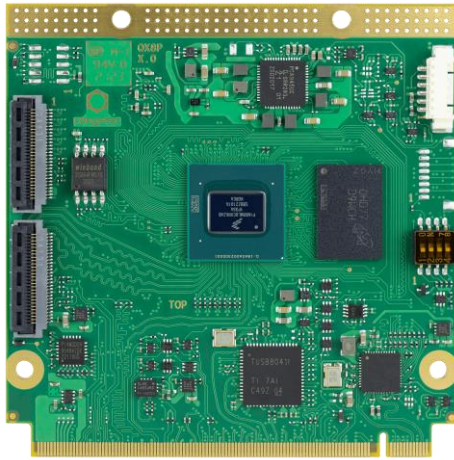
Qseven 2.1 COM, NXP i.MX 8M Plus 14nm processor series with ARM 4-Core Cortex-A53 / M7 + NPU



The information contained in this document has been carefully researched and is, to the best of our knowledge, accurate. However, we assume no liability for any product failures or damages, immediate or consequential, resulting from the use of the information provided herein. Our products are not intended for use in systems in which failures of product could result in personal injury. All trademarks mentioned herein are property of their respective owners. All specifications are subject to change without notice.

NXP i.MX 8M Plus for Industry 4.0 & AI

conga-QMX8-Plus

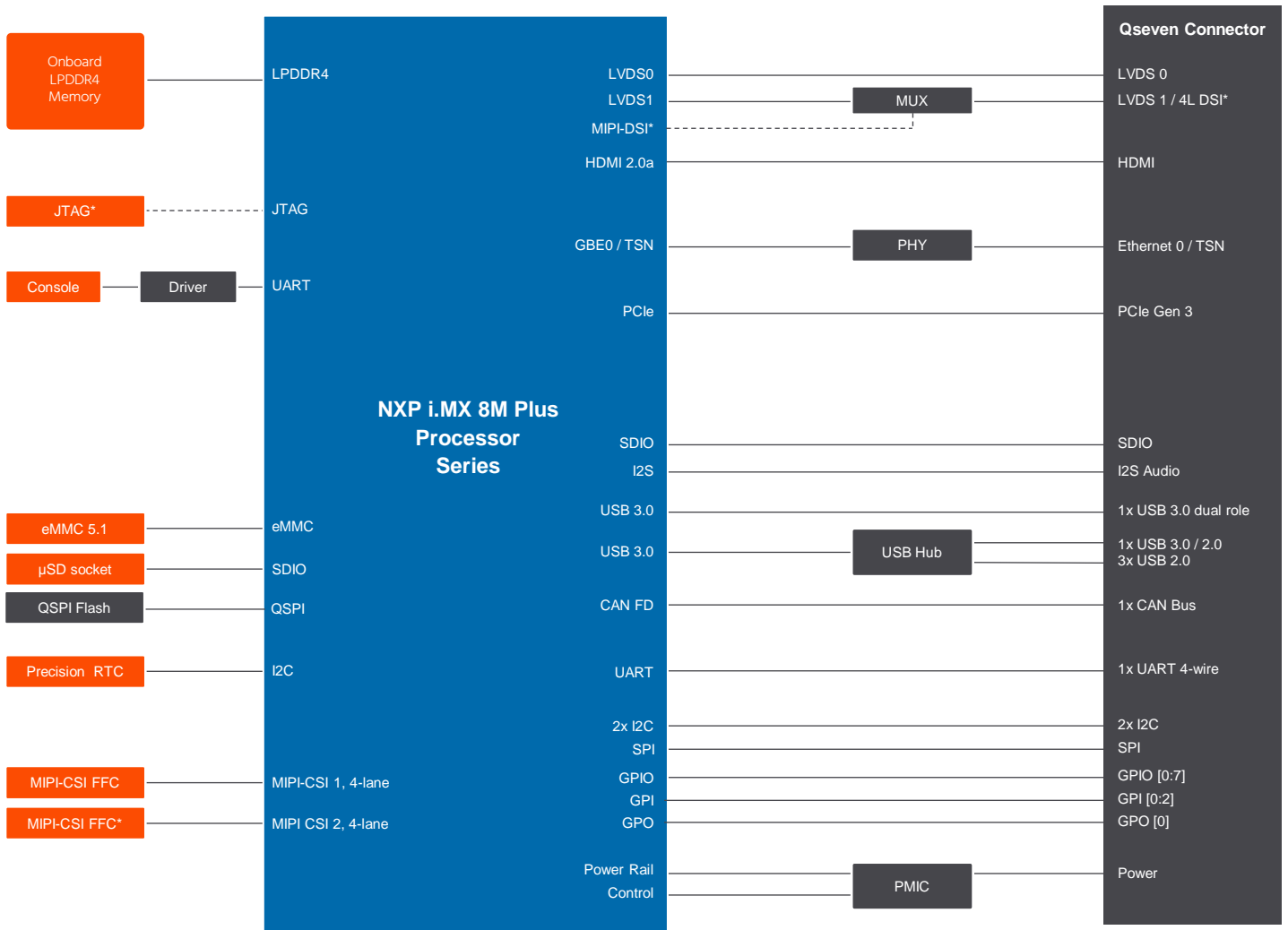


- NXP i.MX 8M Plus 14nm processor series with ARM 4-Core Cortex-A53 / M7 + NPU
- Enhanced AI, Machine Learning and Vision capabilities featuring NPU and integrated camera ISP's
- Ultra low power architecture with 2-5W
- Extended longevity up to 15 years
- Temperature range up to -40°C .. +85°C



Form factor	Qseven Specification 2.1				
CPU SoC	NXP i.MX 8M Plus Processor Cores				
		ARM Cortex-A53	ARM Cortex-M7	NPU	GPU
	i.MX 8M Plus Quad (consumer) i.MX 8M Plus Quad (industrial)	4x @ 1.8 GHz 64bit 4x @ 1.6 GHz 64bit	1x @ 800MHz 1x @ 800MHz	1x up to 2.3 TOPS 1x up to 2.3 TOPS	GC7000UL/GC520L GC7000UL/GC520L
DRAM	Up to 6 GByte onboard LPDDR4 memory 4000 MT/s inline ECC				
AI & Machine Learning	Neural Processing Unit (NPU) with up to 2.3 TOPS NXP eIQ Machine Learning SW tools and libraries				
Ethernet	1x Gbit Ethernet with IEEE 1588 and TSN Support				
I/O Interfaces	1x dual-role USB 3.0 3x USB 2.0 1x USB 3.0 1x SDIO 3.0 1x onboard µSD card socket 1x PCIe 3.0 2x I ² C 1x SPI 1x UART with Handshake 1x CAN FD 12x GPIOs				
Mass Storage	eMMC 5.1 up to 128 GByte SPI NOR Flash up to 32 MByte				
Sound	1x I ² S HiFi 4 DSP				
Graphics	Integrated in SoC GC7000UL 3D graphics with 2 high performance vec4 shaders GC520L 2D graphics VPU up to 1080p60 H.265/H.264 decoding and encoding OpenGL ES 3.1 Vulkan OpenCL 1.2 FP OpenVG 1.1 2 independent displays				
Video Interfaces	1x dual channel 24-bit LVDS 1x HDMI 2.0a 1x MIPI-DSI 4-lane shared with second LVDS channel (optional) Up to 2x MIPI-CSI 4-lane onboard connectors 2x integrated Image Signal Processors (ISP) for cameras with up to 12 MP resolution				
Features	Watchdog Timer Cortex-A53 Console optional JTAG debug interface High Precision Real Time Clock				
Security	Cryptographic Acceleration and Assurance Module (CAAM) Resource Domain Controller ARM®TrustZone® High Assurance Boot support Encryption Engine AES-128/192/256, 3DES, ARC4, RSA4096, TRNG SHA-1, SHA-2, SHA-256, MD-5 RSA-1024, 2048, 3072, 4096 and secure key storage side channel attack resistance				
Boot Loader	U-Boot boot loader				
Operating Systems	Linux, Yocto Project Android				
Power Consumption	Typical application 2-5W @ 5V				
Temperature Range	Operating Temperature Range:		0 to +60°C commercial grade -40 to +85°C industrial grade		
	Storage Temperature Range:		-40 to +85°C		
Humidity	Operating: 10 - 90% r. H. non cond.		Storage: 5 - 95% r. H. non cond.		
Size	70mm x 70 mm				

conga-QMX8-Plus | Block Diagram



* Assembly Option

conga-QMX8-Plus | Order Information

Article	PN	Description
conga-QMX8-Plus/QC-4G eMMC16	016600	Qseven module with low-power 14nm NXP i.MX 8M Plus Quad processor. Features 4x ARM® Cortex®-A53 @ 1.8GHz +1x ARM® Cortex®-M7 + NPU, 4GB onboard LPDDR4 memory and 16GB onboard eMMC. Commercial temperature range from 0°C to 60°C.
conga-QMX8-Plus/QC-2G eMMC16	016601	Qseven module with low-power 14nm NXP i.MX 8M Plus Quad processor. Features 4x ARM® Cortex®-A53 @ 1.8GHz +1x ARM® Cortex®-M7 + NPU, 2GB onboard LPDDR4 memory and 16GB onboard eMMC. Commercial temperature range from 0°C to 60°C.
conga-QMX8-Plus/i-QC-4G eMMC16	016620	Qseven module with low-power 14nm NXP i.MX 8M Plus Quad processor. Features 4x ARM® Cortex®-A53 @ 1.6GHz +1x ARM® Cortex®-M7 + NPU, 4GB onboard LPDDR4 memory and 16GB onboard eMMC. Industrial grade temperature range from -40°C to 85°C.
conga-QMX8-Plus/i-QC-2G eMMC16	016621	Qseven module with low-power 14nm NXP i.MX 8M Plus Quad processor. Features 4x ARM® Cortex®-A53 @ 1.6GHz +1x ARM® Cortex®-M7 + NPU, 2GB onboard LPDDR4 memory and 16GB onboard eMMC. Industrial grade temperature range from -40°C to 85°C.
QMX8-Plus/HSP-T	016650	Standard heatspreader for Qseven module conga-QMX8-Plus with NXP i.MX 8M Plus ARM processor. All standoffs are 2.5mm thread.
QMX8-Plus/HSP-B	016651	Standard heatspreader for Qseven module conga-QMX8-Plus with NXP i.MX 8M Plus ARM processor. All standoffs are with 2.7mm bore hole.
conga-QEVAL/Qseven 2.0 ARM	007005	Evaluation carrier board for Qseven ARM modules.
conga-HDMI add-on card	500025	conga-HDMI add-on card is used for evaluation of the HDMI graphics interface of Qseven modules in combination with the congatec evaluation carrier board conga-QEVAL.
RS232 adapter cable for conga-ARM modules	48000023	RS232 adapter cable for congatec ARM modules console debug application.
Basler dart camera daA3840-30mc	44500041	Basler dart BCON for MIPI camera module daA3840-30mc, 8Mpx, 30fps, 4 CSI2-Lanes, S-Mount.
FFC Basler dart BCON for MIPI, 200mm	10000399	FFC 28 pin cable for Basler BCON dart cameras, 0,5mm pitch. compatible with 28 pin Hirose ZIF connector (PN: FH41-28S-0.5SH(05)
Evetar Lens M118B0418IR F1.8 f4mm 1/1.8" - Lens	10000429	Evetar Lens M118B0418IR F1.8 f4mm 1/1.8" - Lens for Basler dart camera module daA3840-30mc

Our company network supports you worldwide with offices in Germany, Austria, Switzerland, the UK and the USA. For more information please contact:

Headquarters

Germany



FORTEC Elektronik AG

Augsburger Str. 2b
82110 Germering

Phone: +49 89 894450-0
E-Mail: info@fortecaq.de
Internet: www.fortecaq.de

Fortec Group Members

Austria



Distec GmbH Office Vienna

Nuschinggasse 12
1230 Wien

Phone: +43 1 8673492-0
E-Mail: info@distec.de
Internet: www.distec.de

Germany



Distec GmbH

Augsburger Str. 2b
82110 Germering

Phone: +49 89 894363-0
E-Mail: info@distec.de
Internet: www.distec.de

Switzerland



ALTRAC AG

Bahnhofstraße 3
5436 Würenlos

Phone: +41 44 7446111
E-Mail: info@altrac.ch
Internet: www.altrac.ch

United Kingdom



Display Technology Ltd.

Osprey House, 1 Osprey Court
Hinchingsbrooke Business Park
Huntingdon, Cambridgeshire, PE29 6FN

Phone: +44 1480 411600
E-Mail: info@displaytechnology.co.uk
Internet: www.displaytechnology.co.uk

USA



Apollo Display Technologies, Corp.

87 Raynor Avenue, Unit 1
Ronkonkoma, NY 11779

Phone: +1 631 5804360
E-Mail: info@apolloDisplays.com
Internet: www.apolloDisplays.com