



OUR GLOBAL
COMPETENCE
CENTRES

 APOLLO DISPLAY
TECHNOLOGIES



 DISTEC



 DISPLAY
TECHNOLOGY



Manual

Distec

WebPoster-M3

Industrial Full HD HTML Player

Version 1.0

02.02.2022

Table of Contents

1	Revision History	5
2	Introduction	6
3	Features	6
4	Installation and Setup	7
4.1	Hardware Setup of WebPoster-M3	7
4.2	Installation of Artista Device Finder	7
4.3	Network Setup of WebPoster-M3 via Artista Device Finder	8
4.4	Device Setup of WebPoster-M3 via Web Interface.....	9
5	WebPoster-M3 Configuration via Web Interface	10
5.1	System Information	11
5.2	View Logs	12
5.3	Network Configuration	13
5.3.1	Using DHCP	14
5.3.2	Using Static IP Addresses	14
5.4	Browser Settings	15
5.5	Audio Settings	16
5.6	Display Settings	17
5.7	Password Settings	18
5.8	Advanced Options	19
5.8.1	Firmware Update / Board Setup	20
5.8.2	Artista Device Finder Support.....	20
5.8.3	Master Reset	20
5.9	Restart System	21
6	Factory Settings of WebPoster-M3	22
7	Firmware Update.....	23
7.1	Firmware Update via Web Interface	23
7.2	Firmware Update via USB Flash Drive	23
8	Technical Specification	24
9	Order Numbers	25
9.1	Distec POS-WP-PRO Monitor Series	25
9.2	Distec POS-Line Monitor Series.....	25
9.3	Distec BLO-Line A1 Monitor Series	26
9.4	Distec High Bright Monitor Series	26

1 Revision History

Date	Rev.No.	Description	Page
02.02.2022	1.0	Initial version	All

2 Introduction

WebPoster-M3 is a turn-key product to show a specific web page in full-screen mode on the display.

It can be used e.g. for industrial applications to show production instructions or statistics in factories or digital signage applications to show ads.

WebPoster-M3 supports the following Distec monitor series:

- POS-WP-PRO
- POS-Line
- BLO-Line A1
- High Bright

Note:

Before purchasing WebPoster-M3 it is strongly recommended to test if the web page is displayed on the screen as expected.

3 Features

This section gives an overview about the main features of WebPoster-M3:

- Auto start at power-on
- Show a preconfigured web page in full-screen mode on the display (URL not shown)
- Browser features:
 - HTML5
 - JavaScript
 - Configurable auto-reload interval for the web page
 - Virtual keyboard for text input
- Multi-Touch support with gesture control
- Web Interface for device configuration (network parameters, web page address, reload interval, etc.)
- Firmware update via Web Interface or USB flash drive
- Audio output via stereo line out
- Free Windows® software Artista Device Finder for easy configuration of network parameters (static IP or DHCP, hostname, etc.)

Note:

Interaction with web pages via USB keyboard or mouse is **NOT** supported by WebPoster-M3.

4 Installation and Setup

4.1 Hardware Setup of WebPoster-M3

- Connect the WebPoster-M3 monitor to the Ethernet (LAN)
- Connect the WebPoster-M3 monitor to the power supply
- Models with integrated power adapter must be switched on, models with external power adapter start automatically
- After system start the pre-configured web page is displayed on the screen (if WebPoster-M3 has access to the Internet)

4.2 Installation of Artista Device Finder

- Install the free Windows software Artista Device Finder (ADF) on the PC. It is required to find the WebPoster-M3 in the network and to execute the configuration of it.

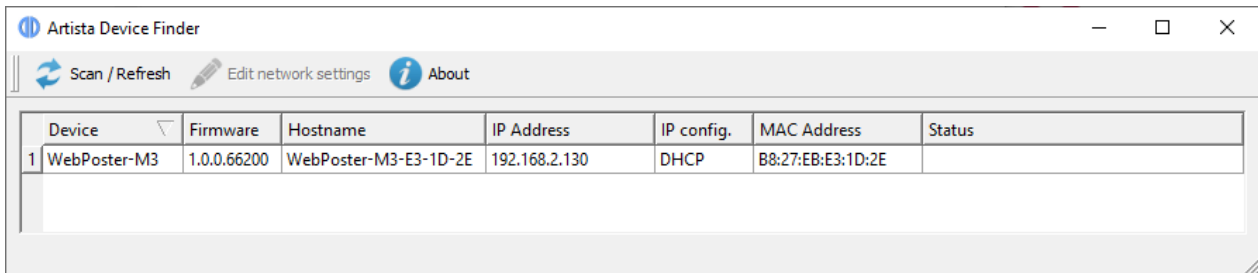
Download link for the ADF setup:

<https://www.distec.de/service/downloads/webposter-downloads/>

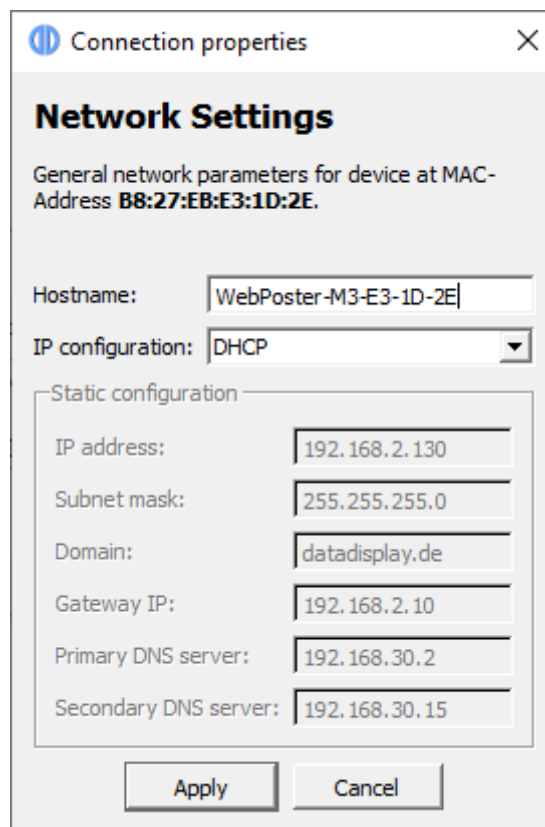
- The Windows PC and the WebPoster-M3 must be connected to the same network

4.3 Network Setup of WebPoster-M3 via Artista Device Finder

- Make sure that WebPoster-M3 is powered on and connected to the same network as the Windows PC
- Start the software Artista Device Finder on the Windows PC
- Press the button **Scan / Refresh** to scan the network for available WebPoster-M3 devices



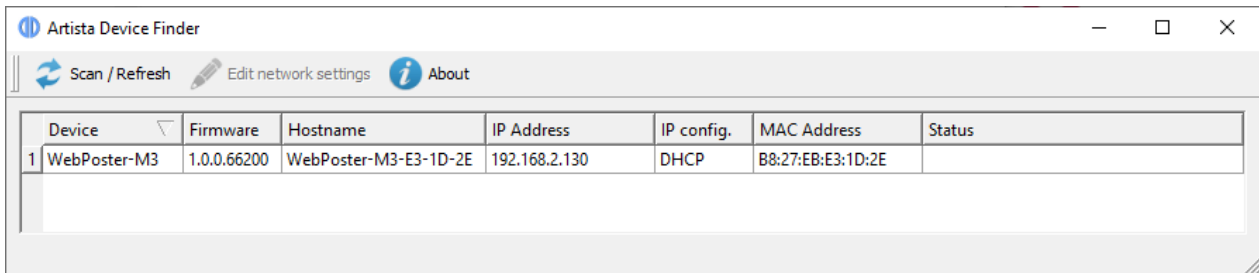
- Double-click the device to edit the network parameters as required



- Press the button **Apply** and enter the **Username** and **Password** of WebPoster-M3 to save the new network parameters on the device. The default login parameters can be found in section Factory Settings of WebPoster-M3

4.4 Device Setup of WebPoster-M3 via Web Interface

- Use the Artista Device Finder, to open the Web Interface of WebPoster-M3 for further configuration. To do so, right-click on the device and select the context menu **Open in web browser**. Your standard Browser opens with the IP address of the WebPoster-M3 and a login dialog appears



The screenshot shows the 'Artista Device Finder' application window. It has a title bar with standard window controls and a toolbar with 'Scan / Refresh', 'Edit network settings', and 'About' buttons. Below the toolbar is a table with the following data:

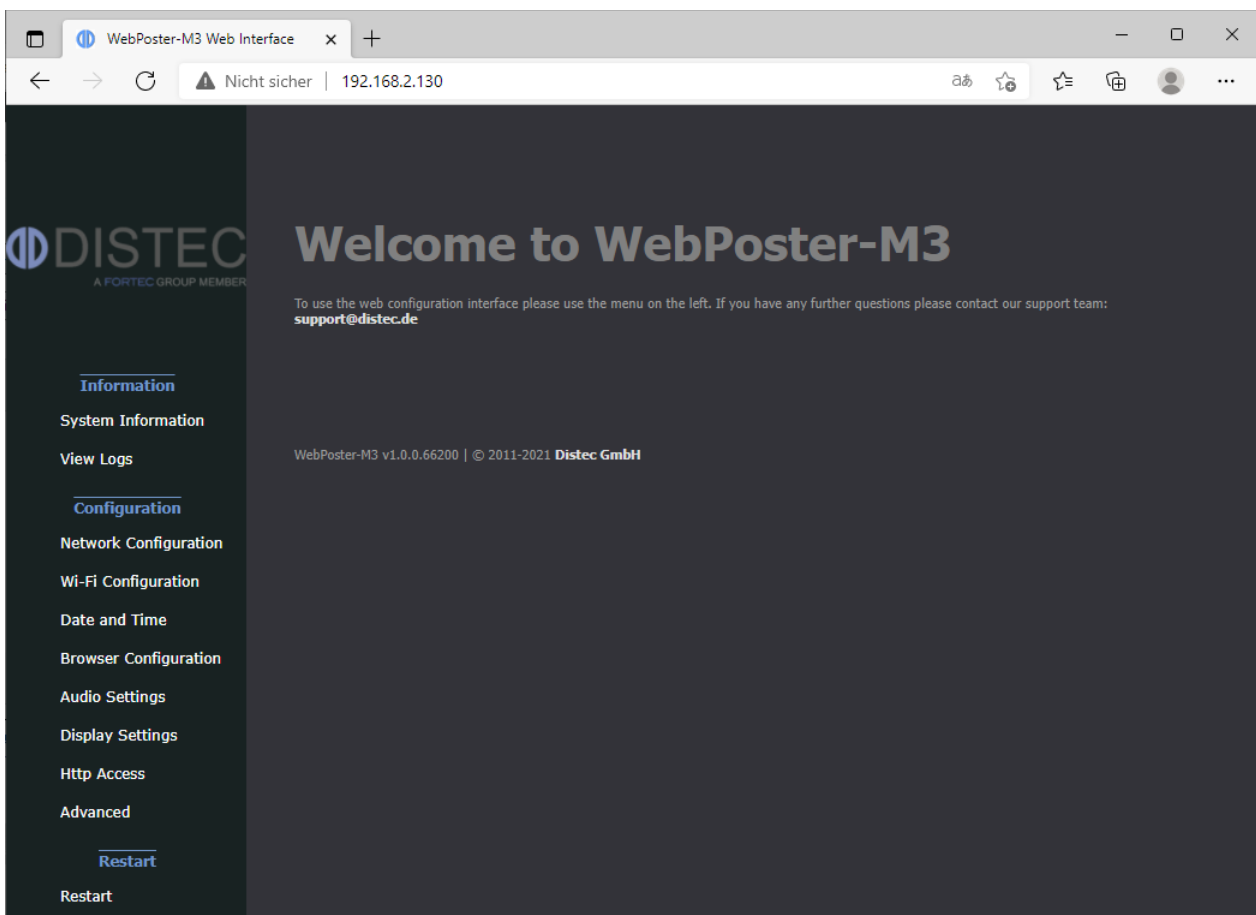
Device	Firmware	Hostname	IP Address	IP config.	MAC Address	Status
1 WebPoster-M3	1.0.0.66200	WebPoster-M3-E3-1D-2E	192.168.2.130	DHCP	B8:27:EB:E3:1D:2E	

- Log in to the Web Interface with the default login parameters (see section Factory Settings of WebPoster-M3)
- Select the menu **Browser Settings** and enter the URL of the web site that should be displayed on the WebPoster-M3 screen and the **Reload Interval** if necessary. See section Browser Settings for more details
- Select the menu **Display Settings** to select the display orientation **Portrait**, if required. See section Display Settings for more details
- Select the menu **Change Password** to set your own password. See section Password Settings for more details

Now your WebPoster-M3 monitor is ready to use.

5 WebPoster-M3 Configuration via Web Interface

The WebPoster-M3 configuration interface can be accessed with any common web browser like Microsoft Edge, Google Chrome, Mozilla Firefox and many others. You can establish the connection by using the Windows software Artista Device Finder or by typing the IP address of your device into the browser manually. The current IP address of WebPoster-M3 is displayed on the screen during the system start after power on. When you are asked for the device password, use the stored password (for the default password see the section Factory Settings of WebPoster-M3).



5.1 System Information

This is the menu to get all system information of WebPoster-M3 with one click.

In case of a technical question or problem, please add this information to your support request.

WebPoster-M3 System Information
Listing of most important device parameters and settings

Information

- System Information
- View Logs
- Configuration
 - Network Configuration
 - Wi-Fi Configuration
 - Date and Time
 - Browser Configuration
 - Audio Settings
 - Display Settings
 - Http Access
 - Advanced
- Restart

Firmware Information

- Configuration Name: PA-36-999
- Configuration version: 1.0.0.0
- Firmware version: 1.0.0.66200
- Kernel version: 5.10.17.64911.1
- Display controller version: 2.3.2
- Operating mode: Normal

Hardware Information

- Hardware version: 1.1_01
- CPU temperature: 41 °C
- CPU frequency: 1200 MHz

Filesystem Usage

Storage	Size	Used	Avail	Use%
Internal:	5.1G	16M	4.8G	1%
SD Card:		not inserted		

Display Configuration

- Master brightness: 100%
- Display power status: On
- Resolution: 1920x1080
- Input source: internal

Network Configuration

- Network setup: DHCP
- IP-address: 192.168.2.130
- Netmask: 255.255.255.0
- Gateway IP-address: 192.168.2.10
- Hostname: WebPoster-M3-E3-1D-2E
- Domain: datadisplay.de
- DNS: 192.168.30.2 192.168.30.15
- MAC-address: B8:27:EB:E3:1D:2E
- Description: WebPoster-M3
 - OpenVPN: Disabled

Wi-Fi Configuration

- Wi-Fi status: Off
- Interface status: Not found
- Network SSID: Not connected

Date and Time

- Date and Time setup: Manual
- Time: Mon Jan 31 17:47:42 UTC 2022
- Time zone: Etc/UTC

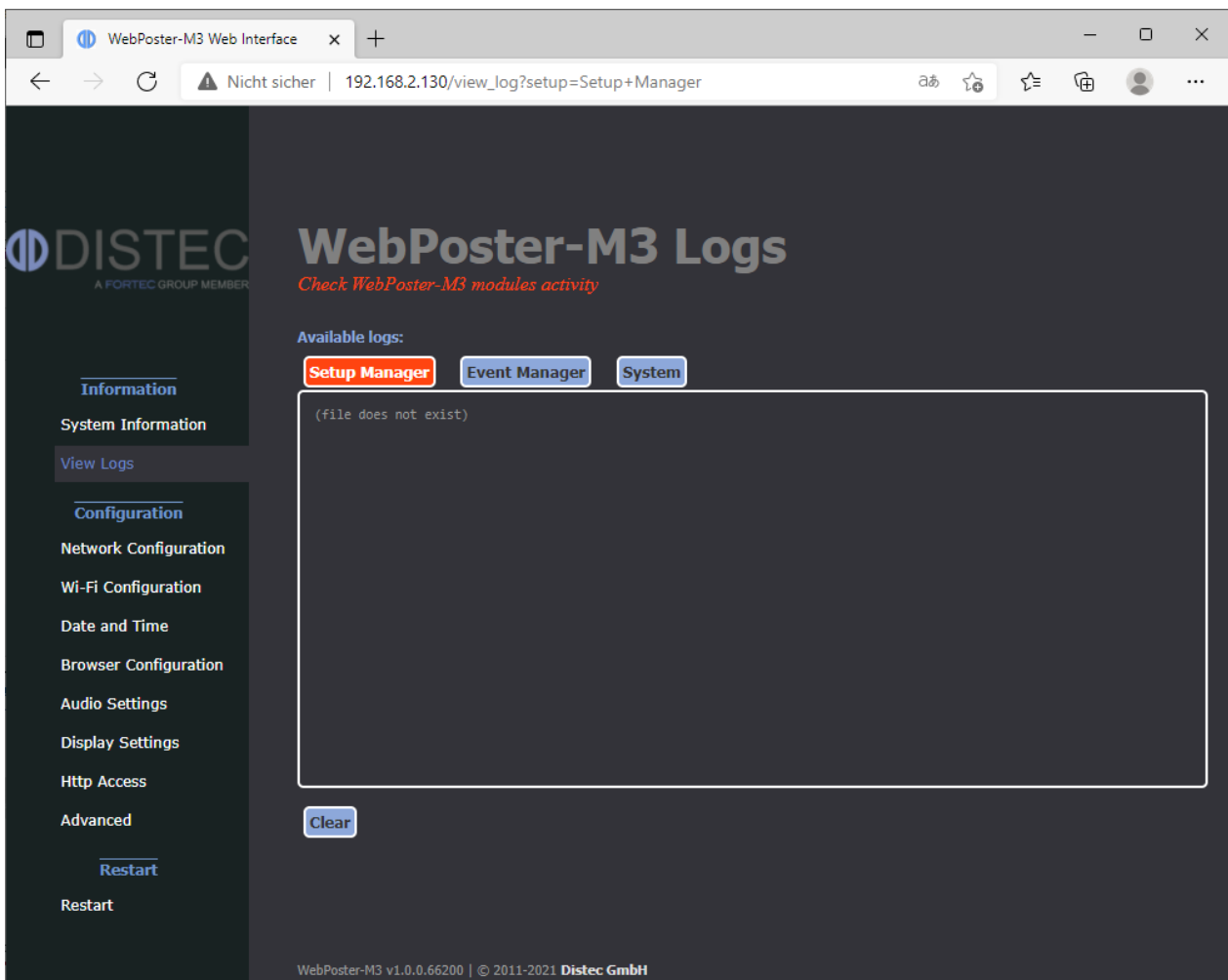
WebPoster-M3 v1.0.0.66200 | © 2011-2021 Distec GmbH

5.2 View Logs

WebPoster-M3 operation can be monitored through its log files. There are several dedicated log files on the device, each committed to logging of a particular subsystem:

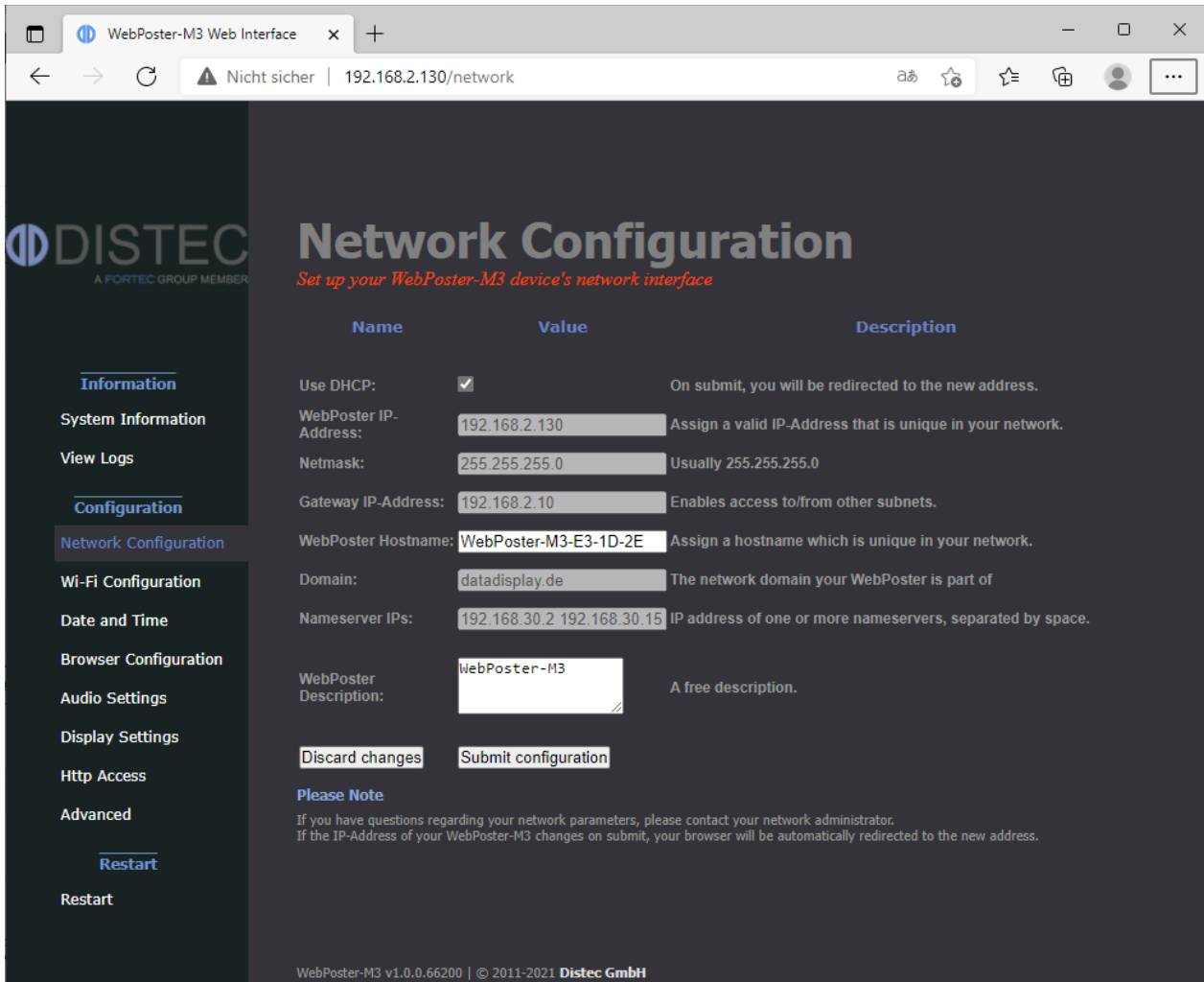
- Setup Manager – shows which setup files have been executed on the device
- Event Manager – shows errors related to event processing
- System – shows the system log of the Linux operating system

The log files can be erased by clicking “Clear”.



5.3 Network Configuration

This is the menu to change the settings of the network interface of WebPoster-M3.



Discard changes:

Use this button to reset all input fields. This will have no effect on the actual configuration settings - only the form inputs will be cleared.

Submit configuration:

Use this button to apply and save the settings entered.
After submitting the new configuration, WebPoster-M3 restarts automatically.

5.3.1 Using DHCP

To use DHCP for network configuration, tick the **Use DHCP** checkbox. If the device should be reachable by its hostname, the DHCP server must be able to pass hostnames to the DNS. The default hostname of WebPoster-M3 has the following format: WebPoster-M3-xx-xx-xx (WebPoster-M3- followed by the last 3 bytes of its MAC address), but can be set to something more descriptive if needed. The network settings will be displayed on the splash screen shown during start-up of the device.

If DHCP setup fails, the device's network will be configured with its default settings (see section Factory Settings of WebPoster-M3 for more details).

5.3.2 Using Static IP Addresses

To use a static network configuration for WebPoster-M3, disable the **Use DHCP** checkbox. In this mode the following network parameters can be set manually:

- IP address of WebPoster-M3
- Netmask
- IP address of the Gateway
- Hostname of WebPoster-M3
- Domain
- IP address of the Nameserver (one or more Nameserver addresses separated by space)

When using a static IP address, it must be assured that this address is not used by any other device connected to the network. Please contact your network administrator for details and configuration parameters.

5.4 Browser Settings

This is the menu to configure the integrated Web Browser of WebPoster-M3.

Home Page:

Set the address (URL) of the web page to be shown in full screen mode on the display.

Reload Interval:

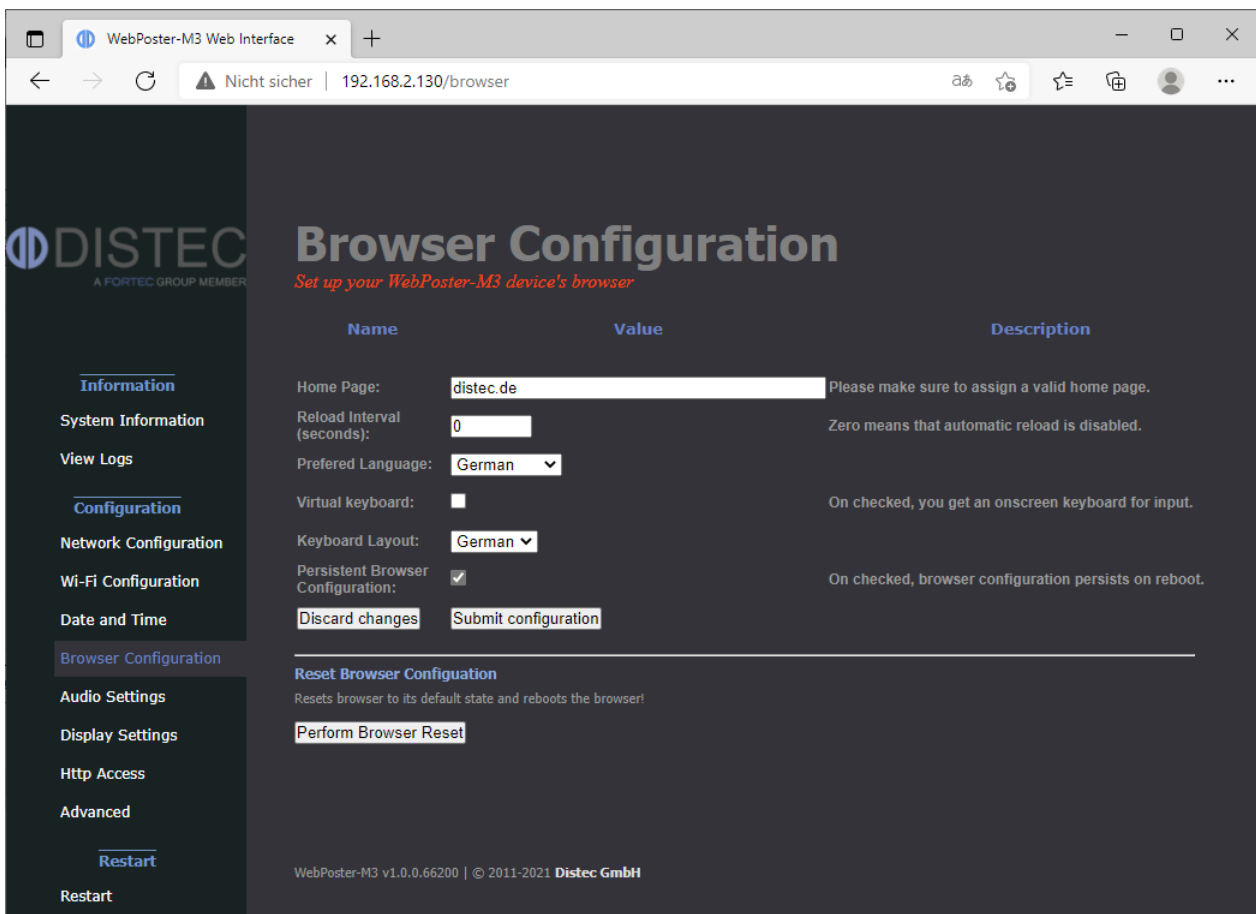
If the content of the web page changes from time to time and the web page doesn't support content update in the browser directly, WebPoster-M3 can be configured to reload the web page periodically. The interval can be set in seconds. To disable the reload function, the interval must be set to **0**.

Discard changes:

Use this button to reset all input fields. This will have no effect on the actual configuration settings - only the form inputs will be cleared.

Submit configuration:

Apply and save the settings above.

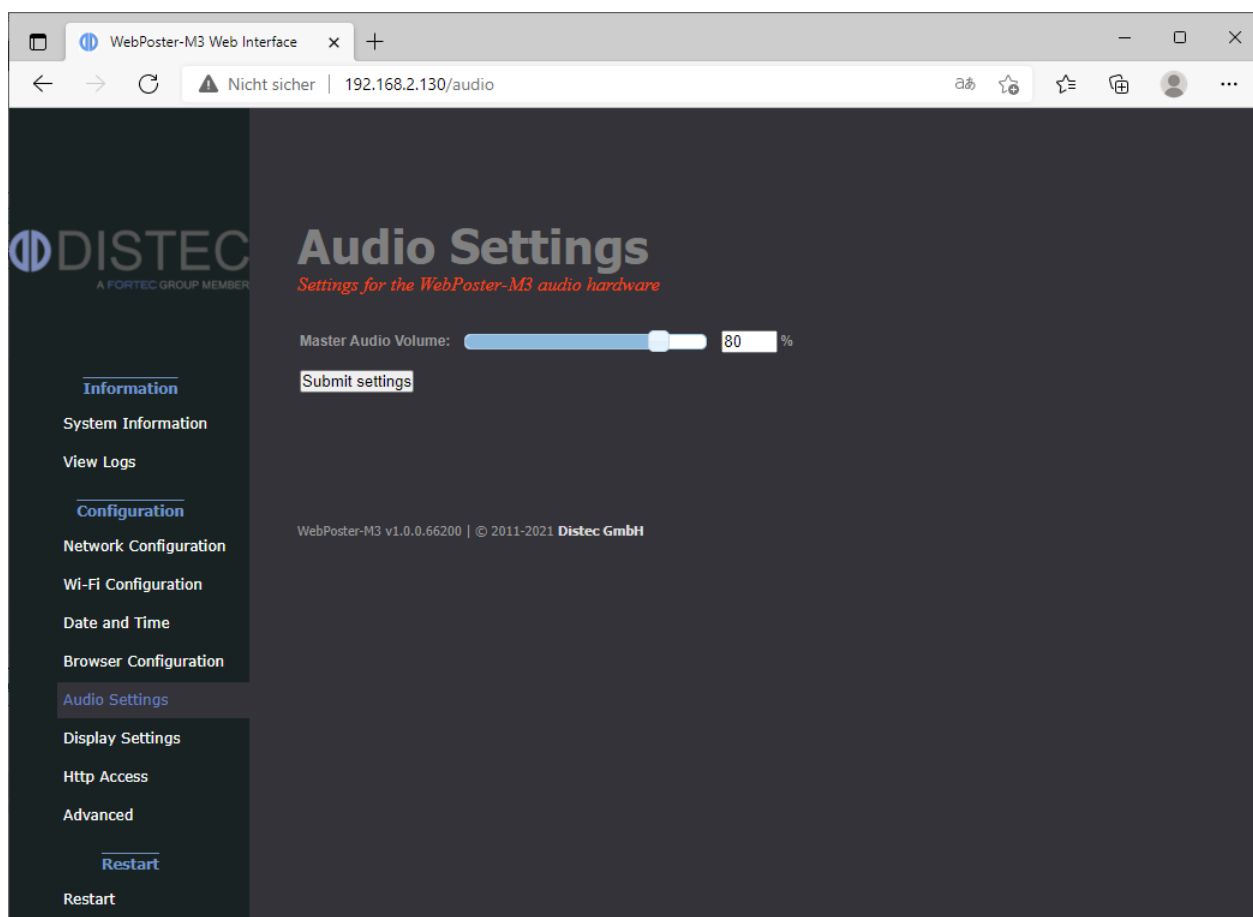


5.5 Audio Settings

This page can be used to set the volume level for audio playback between 0% and 100%.

Submit settings:

Apply and save the selected audio volume.



5.6 Display Settings

This page can be used to configure the orientation of the content on the screen.

Landscape:

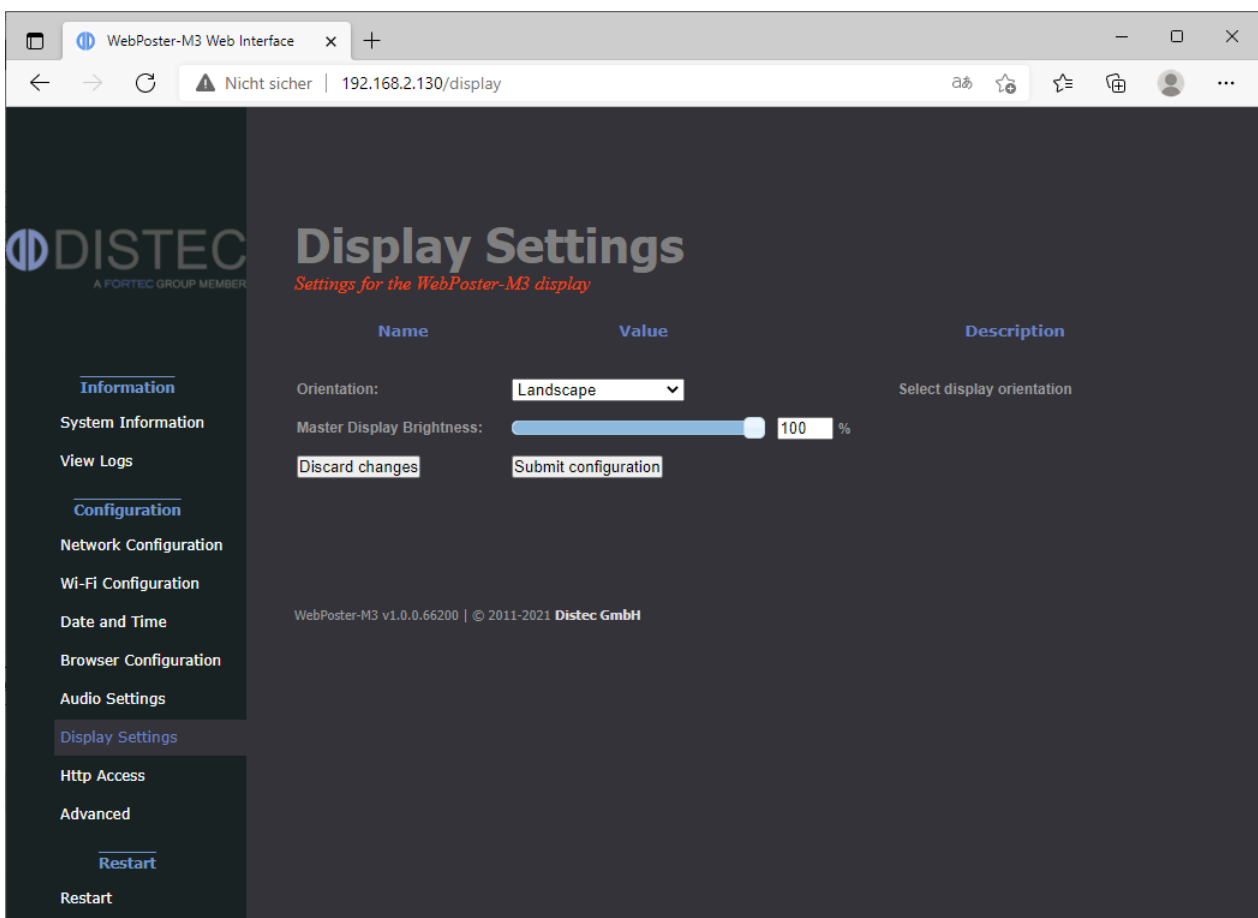
The content is shown on the display in landscape mode (default).

Portrait:

The content is shown on the display in portrait mode (rotated 90° counterclockwise).

Submit settings:

Apply and save the display orientation.



5.7 Password Settings

This is the menu to change the password of WebPoster-M3. This password is required to access the device with Artista Device Finder and with this Web Interface.

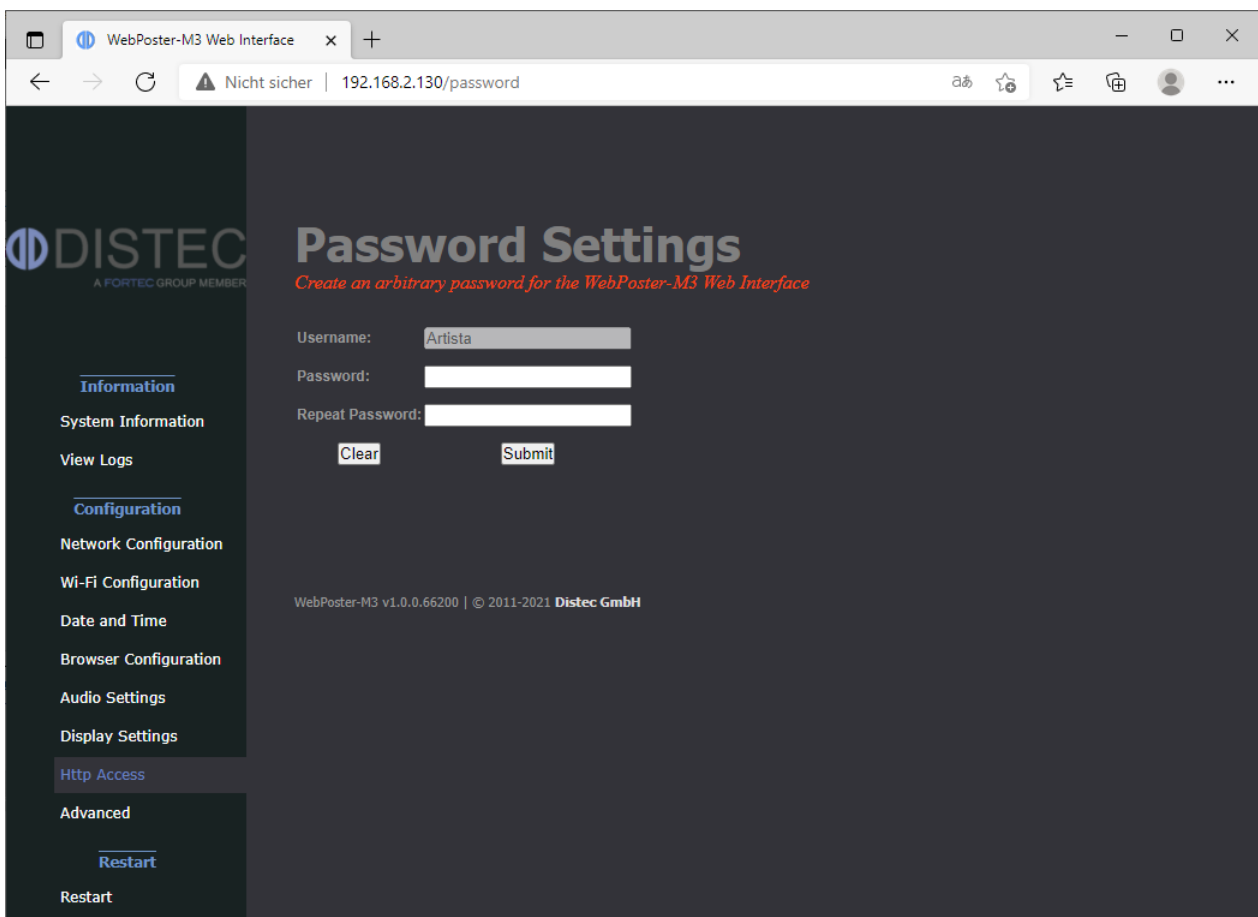
The Username is not configurable. The new password must be entered twice to prevent the device from being inaccessible due to typing errors.

Clear:

Use this button to reset the form data. This will have no effect on the actual password setting - only the form inputs will be cleared.

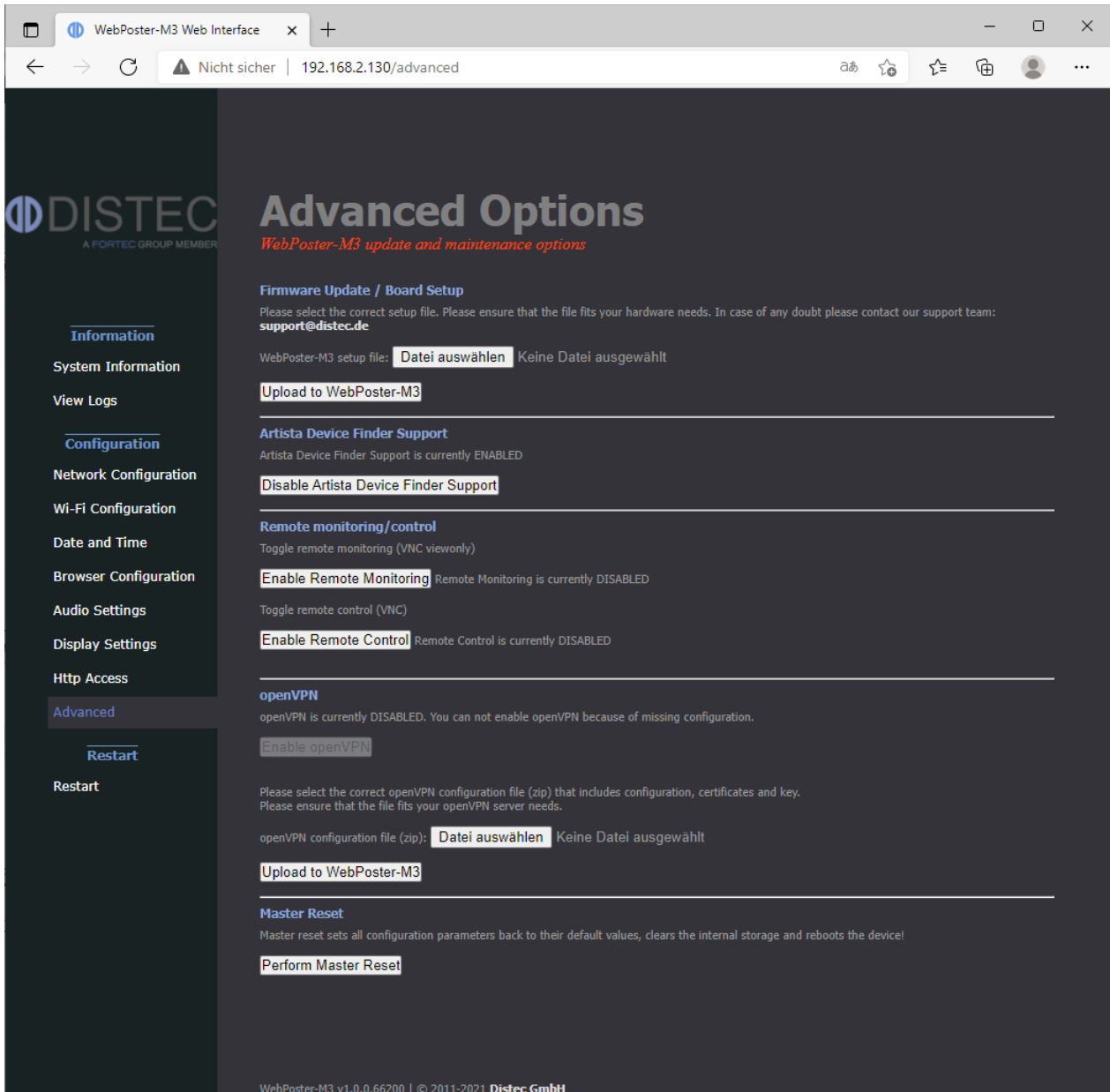
Submit:

By pressing this button, the new password will be activated and you will have to re-login on changing to any other page of the web interface.



5.8 Advanced Options

This is the menu to update the WebPoster-M3 firmware or reset the device to the factory settings.



5.8.1 Firmware Update / Board Setup

This function can be used to apply a firmware update or setup packages to WebPoster-M3.

Please contact your sales contact person in the FORTEC Group to get the required file.

To check information about your device, select **System Information** from the menu on the left. Please make sure that the firmware update or setup file you are going to install is compatible with your hardware.

Click the **Browse** button and then choose the correct firmware update or setup file. Then press the button **Upload to WebPoster-M3** to upload and install the software on the device.

Warning:

**Do not power off your device while the update process is running!
This can damage the hardware!**

Further details can be found in the section Firmware Update.

5.8.2 Artista Device Finder Support

Here you can enable or disable support for the Artista Device Finder tool. If enabled (default), network configuration can be done remotely from a PC connected to the same **physical** network (for browser access, the PC and the device have to be in the same subnet, for Artista Device Finder this is not mandatory). Please see the Artista Device Finder manual for more information.

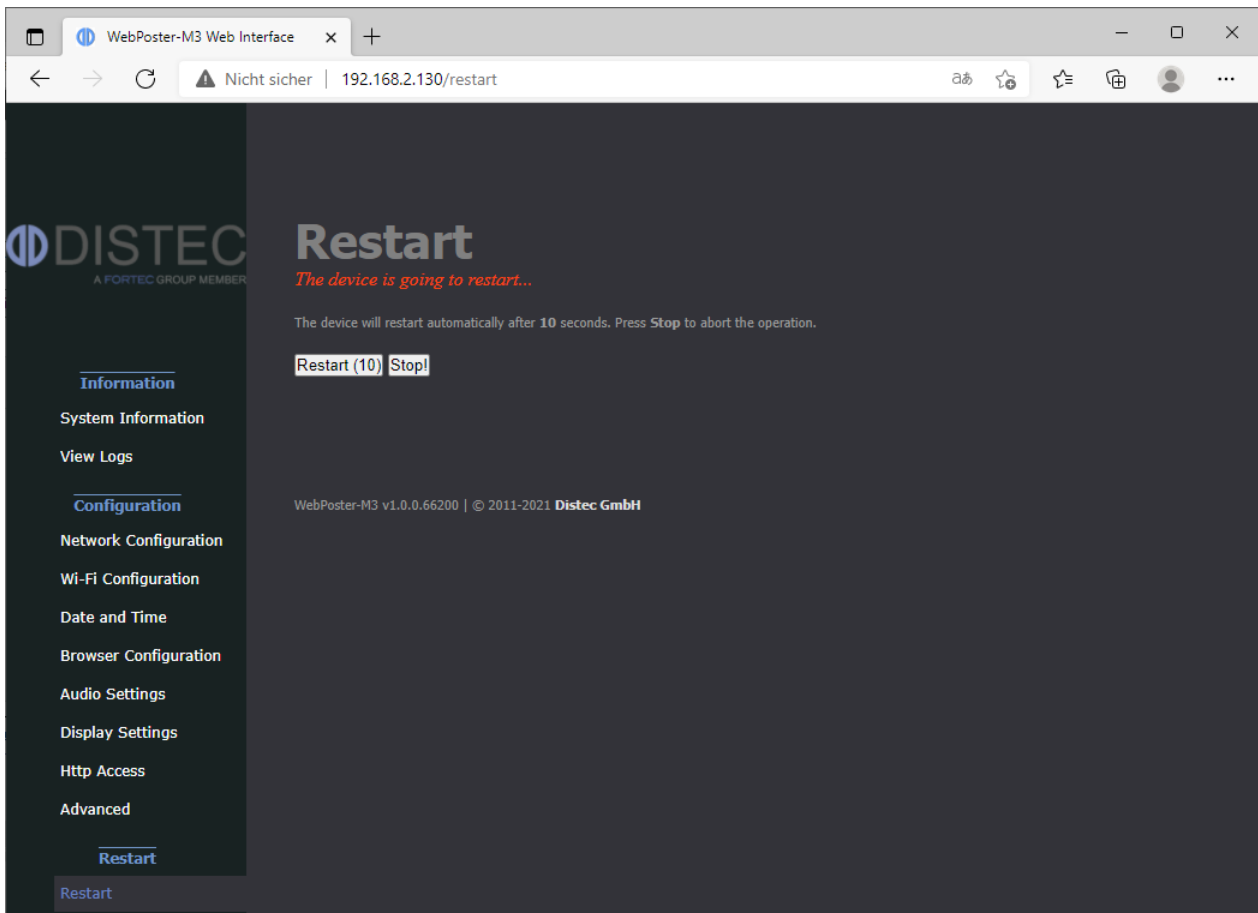
5.8.3 Master Reset

Master reset sets all configuration parameters of WebPoster-M3 back to their factory default values and reboots the device!

Click **Perform Master Reset** to execute this function and wait until WebPoster-M3 has restarted.

5.9 Restart System

In some cases it might be necessary to restart WebPoster-M3. The device will automatically restart in 10 seconds, but can also be restarted immediately by clicking the **Restart** button. Press **Stop** if you got on this page by mistake and don't need to restart the device.



6 Factory Settings of WebPoster-M3

This section shows all factory settings of WebPoster-M3. WebPoster-M3 can be reset to these values by using the **Master Reset** in the Web Interface (see section Master Reset for details).

Default Network Configuration:

Parameter	Default Value	Notes
DHCP	Enabled	
IP Address	192.168.0.1	Default IP address, if no DHCP server is available
Netmask	255.255.255.0	Default netmask, if no DHCP server is available
Hostname	WebPoster-M3-xx-xx-xx	xx-xx-xx represents the last 6 bytes of the device's MAC address

Default Login Data:

This login data is required for Artista Device Finder and the Web Interface.

Parameter	Default Value	Notes
Username	Artista	Not configurable
Password	Artista	

Default Browser Configuration:

Parameter	Default Value	Notes
Web Page URL	http://www.distec.de/	
Auto reload	0	Auto reload disabled

7 Firmware Update

This section describes how to update the firmware of WebPoster-M3.

Name of the Firmware Update File:

setup_WebPoster-M3_Firmware_Update_vV.E.R.S.bin

Note: "V.E.R.S" is a placeholder for the new firmware version number (e.g. "1.2.0.58835")

Warning:

Do not power off your device while the update process is running!

This can damage the hardware!

The WebPoster-M3 restarts after the firmware installation automatically. This is normal behavior

Preparations before the Firmware Update:

- Download the firmware zip file "WebPoster-M3_Firmware_Update_vV.E.R.S.zip" and save it on your computer
- Extract the contained firmware file and install it on your WebPoster-M3 as described in the next section

The new firmware can be installed on WebPoster-M3 by using one of the following methods:

7.1 Firmware Update via Web Interface

- Open the web frontend of WebPoster-M3
- Select the menu **Advanced**
- Click the **Browse** button in the section **Firmware Update / Board Setup** and select the correct firmware update file
- Press the button **Upload to WebPoster-M3** to upload and install the software on the device
- Wait up to 4 minutes and consider the messages in your browser until the installation has finished

7.2 Firmware Update via USB Flash Drive

- Copy the firmware update file into the root directory of an empty USB flash drive
- Insert the USB flash drive into the USB port of your WebPoster-M3
- Read the status messages on the display
- Wait up to 4 minutes until the installation has finished
- Verify if the installation was successful. To do so, insert the USB flash drive into a PC and open the log-file called "setup_WebPoster-M3_Firmware_Update_vV.E.R.S.log". Check the messages in this log file. For a successful update the last line states:
"Update complete, current FW version is V.E.R.S"

8 Technical Specification

Hardware Requirement	Distec Monitor Series	POS-WP-PRO
		POS-Line
		BLO-Line A1
		High Bright
Operating System	Embedded Linux	Based on Debian 10 (Buster)
	Kernel	Version 5.10.17
Integrated Browser	Chromium	Version 88.0.4324.187
	HTML5	Yes
	JavaScript	Yes
Display	Resolution	1024 x 768
		1280 x 800
		1280 x 1024
		1920 x 1080
Network	Ethernet 10/100	1x
	Wi-Fi	Yes via USB Dongle
	2G GSM	Not supported
	3G UMTS	Not supported
	4G LTE	Not supported
USB	USB 2.0 Host	2x
	USB 3.0 Host	Not available
Audio	USB Speaker	Not supported
	Stereo Line Out	1x
HDMI	Input	1x
	Output	Not available
Input Devices	Keyboard	Not supported
	Mouse	Not supported
	Touch Screen	Yes

9 Order Numbers

9.1 Distec POS-WP-PRO Monitor Series

The table below lists all available POS-WP-PRO monitors with preinstalled WebPoster-M3. For detailed information about the hardware and available options, please contact your sales contact person in the FORTEC Group.

Part #	Description	Display Size	Display Resolution
MO-06-078	POS-WP-070-00-PRO WXGA/PCT	7,0"	1280 x 800
MO-06-081	POS-WP-070-01-PRO WXGA/PCT	7,0"	1280 x 800
MO-06-074	POS-WP-101-00-PRO WXGA/PCT	10,1"	1280 x 800
MO-06-076	POS-WP-121-01-PRO WXGA/PCT	12,1"	1280 x 800
MO-06-072	POS-WP-125-00-PRO FHD/PCT	12,5"	1920 x 1080
MO-06-071	POS-WP-156-00-PRO FHD/PCT	15,6"	1920 x 1080
MO-06-077	POS-WP-156-03-PRO FHD/PCT/HB	15,6"	1920 x 1080
MO-06-082	POS-WP-156-04-PRO FHD/PCT/HB	15,6"	1920 x 1080

9.2 Distec POS-Line Monitor Series

The table below lists all available POS-Line Open Frame monitors with preinstalled WebPoster-M3. For detailed information about the hardware and available options like front bezels, protective glasses, etc., please contact your sales contact person in the FORTEC Group.

Part #	Description	Display Size	Display Resolution
DS-92-233	POS-Line V2 15,0 WebPoster M3	15,0"	1024 x 768
DS-92-232	POS-Line V2 15,6 WebPoster M3	15,6"	1920 x 1080
DS-92-231	POS-Line V2 17,0 WebPoster M3	17,0"	1280 x 1024
DS-92-230	POS-Line V2 17,3 WebPoster M3	17,3"	1920 x 1080
DS-92-229	POS-Line V2 19,0 WebPoster M3	19,0"	1280 x 1024
DS-92-228	POS-Line V2 21,5 WebPoster M3	21,5"	1920 x 1080
DS-92-227	POS-Line V2 24,0 WebPoster M3	24,0"	1920 x 1080
DS-92-226	POS-Line 31,5 WebPoster M3	31,5"	1920 x 1080
DS-92-225	POS-Line 42 WebPoster M3	42,0"	1920 x 1080
DS-92-224	POS-Line 46 WebPoster M3	46,0"	1920 x 1080
DS-92-223	POS-Line 54,6 WebPoster M3	54,6"	1920 x 1080

9.3 Distec BLO-Line A1 Monitor Series

The table below lists all available BLO-Line A1 monitors with preinstalled WebPoster-M3. For detailed information about the hardware and available options, please contact your sales contact person in the FORTEC Group.

Part #	Description	Display Size	Display Resolution
DS-92-215	BLO-Line 24 WebPoster Touch M3	24,0"	1920 x 1080
DS-92-222	BLO-Line 24 WebPoster M3	24,0"	1920 x 1080
DS-92-214	BLO-Line 31,5 WebPoster Touch M3	31,5"	1920 x 1080
DS-92-221	BLO-Line 31,5 WebPoster M3	31,5"	1920 x 1080
DS-92-213	BLO-Line 42 WebPoster Touch M3	42,0"	1920 x 1080
DS-92-220	BLO-Line 42 WebPoster M3	42,0"	1920 x 1080
DS-92-212	BLO-Line 46 WebPoster Touch M3	46,0"	1920 x 1080
DS-92-219	BLO-Line 46 WebPoster M3	46,0"	1920 x 1080
DS-92-211	BLO-Line 54,6 WebPoster Touch M3	54,6"	1920 x 1080
DS-92-218	BLO-Line 54,6 WebPoster M3	54,6"	1920 x 1080

9.4 Distec High Bright Monitor Series

The table below lists all available High Bright Open Frame monitors with preinstalled WebPoster-M3. For detailed information about the hardware and available options like front bezels, etc., please contact your sales contact person in the FORTEC Group.

Part #	Description	Display Size	Display Resolution
DS-92-210	POS-Line 31,5 1500cd HB WebPoster M3	31,5"	1920 x 1080

Our company network supports you worldwide with offices in Germany, Austria, Switzerland, the UK and the USA. For more information please contact:

Headquarters

Germany



FORTEC Elektronik AG

Augsburger Str. 2b
82110 Germering

Phone: +49 89 894450-0
E-Mail: info@forteca.de
Internet: www.forteca.de

Fortec Group Members

Austria



Distec GmbH Office Vienna

Nuschinggasse 12
1230 Wien

Phone: +43 1 8673492-0
E-Mail: info@distec.de
Internet: www.distec.de

Germany



Distec GmbH

Augsburger Str. 2b
82110 Germering

Phone: +49 89 894363-0
E-Mail: info@distec.de
Internet: www.distec.de

Switzerland



ALTRAC AG

Bahnhofstraße 3
5436 Würenlos

Phone: +41 44 7446111
E-Mail: info@altrac.ch
Internet: www.altrac.ch

United Kingdom



Display Technology Ltd.

Osprey House, 1 Osprey Court
Hinchingbrooke Business Park
Huntingdon, Cambridgeshire, PE29 6FN

Phone: +44 1480 411600
E-Mail: info@displaytechnology.co.uk
Internet: www.displaytechnology.co.uk

USA



Apollo Display Technologies, Corp.

87 Raynor Avenue, Unit 1
Ronkonkoma, NY 11779

Phone: +1 631 5804360
E-Mail: info@apolloDisplays.com
Internet: www.apolloDisplays.com