



OUR GLOBAL  
COMPETENCE  
CENTRES

 APOLLO DISPLAY  
TECHNOLOGIES



 DISTEC



 DISPLAY  
TECHNOLOGY



# Manual

## Distec

### WebPoster-IQ

Industrial Full HD HTML Player

DS-60-787

Version 1.3

31.01.2022

---

## Table of Contents

1	Revision History .....	4
2	Introduction .....	5
3	Features .....	5
4	Installation and Setup .....	6
4.1	Hardware Setup of WebPoster-IQ .....	6
4.2	Installation of Artista Device Finder .....	6
4.3	Network Setup of WebPoster-IQ via Artista Device Finder .....	7
4.4	Device Setup of WebPoster-IQ via Web Interface .....	8
5	WebPoster-IQ Configuration via Web Interface .....	9
5.1	Network Settings .....	10
5.1.1	Using DHCP .....	11
5.1.2	Using Static IP Addresses .....	11
5.2	Browser Settings .....	12
5.3	Audio Settings .....	13
5.4	Display Settings .....	14
5.5	Password Settings .....	15
5.6	Advanced Options .....	16
5.6.1	Firmware Update / Board Setup .....	16
5.6.2	Artista Device Finder Support .....	17
5.6.3	Master Reset .....	17
5.7	System Information .....	18
5.8	Restart System .....	19
5.9	Shut Down System .....	20
6	Factory Settings of WebPoster-IQ .....	21
7	Technical Specification .....	22
8	Order Numbers .....	23
8.1	WebPoster-IQ Firmware .....	23
8.2	Distec POS-Line IQ Atom Monitor Series .....	23
8.3	Distec POS-Line BLO IQ Atom Monitor Series .....	23
8.4	Distec BLO-Line IQ Atom Monitor Series .....	24
8.5	USB Speaker .....	24

## 1 Revision History

Date	Rev.No.	Description	Page
16.07.2014	1.0	Initial version	All
19.04.2017	1.1	General update for new firmware version 1.6.0	All
02.01.2020	1.2	Added POS-Line IQ BLO monitor series as supported hardware Added BLO-Line IQ monitor series as supported hardware	All
31.01.2022	1.3	General update for new firmware version 1.11.0	All

## 2 Introduction

WebPoster-IQ is a turn-key product to show a specific web page in full-screen mode on the display.

It can be used e.g. for industrial applications to show production instructions or statistics in factories or digital signage applications to show ads.

WebPoster-IQ supports the following Distec monitor series:

- POS-Line IQ Atom
- POS-Line BLO IQ Atom
- BLO-Line IQ Atom
- POS-Line IQ Ontario (legacy product)

**Note:**

Before purchasing WebPoster-IQ it is strongly recommended to test, if the web page is displayed on the screen as expected.

## 3 Features

This section gives an overview about the main features of WebPoster-IQ:

- Auto start at power-on
- Show a preconfigured web page in full-screen mode on the display (URL not shown)
- Browser features:
  - HTML5
  - JavaScript
  - Configurable auto-reload interval for the web page
- Web Interface for device configuration (network parameters, web page address, reload interval, etc.)
- Firmware update via Web Interface or USB flash drive
- HDMI output to clone the screen on a second display
- Audio output via USB speaker (IQ Atom series) or stereo line out (IQ Ontario series)
- Free Windows® software Artista Device Finder for easy configuration of network parameters (static IP or DHCP, hostname, etc.)

**Note:**

Interaction with web pages via keyboard, mouse or touch screen is **NOT** supported by WebPoster-IQ.

## 4 Installation and Setup

### 4.1 Hardware Setup of WebPoster-IQ

- Connect the WebPoster-IQ monitor to the Ethernet (LAN)
- Connect the WebPoster-IQ monitor to the power supply
- Models with integrated power adapter must be switched on, models with external power adapter start automatically
- After system start the pre-configured web page is displayed on the screen (if WebPoster-IQ has access to the Internet)

### 4.2 Installation of Artista Device Finder

- Install the free Windows software Artista Device Finder (ADF) on the PC. It is required to find the WebPoster-IQ in the network and to execute the configuration of it.

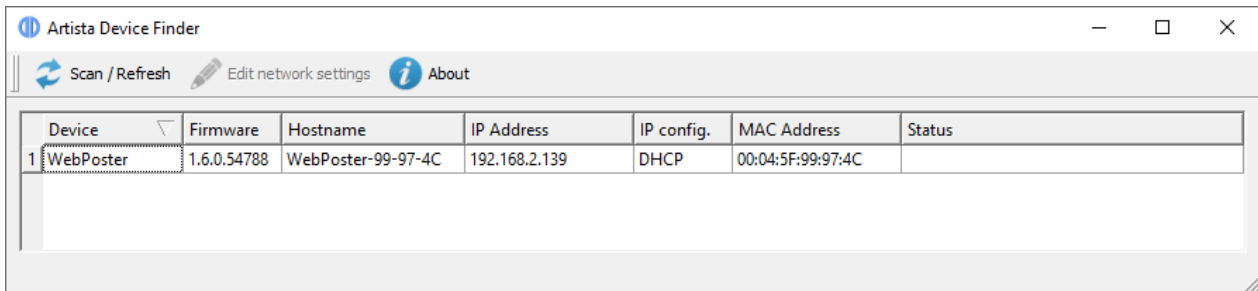
Download link for the ADF setup:

<https://www.distec.de/service/downloads/webposter-downloads/>

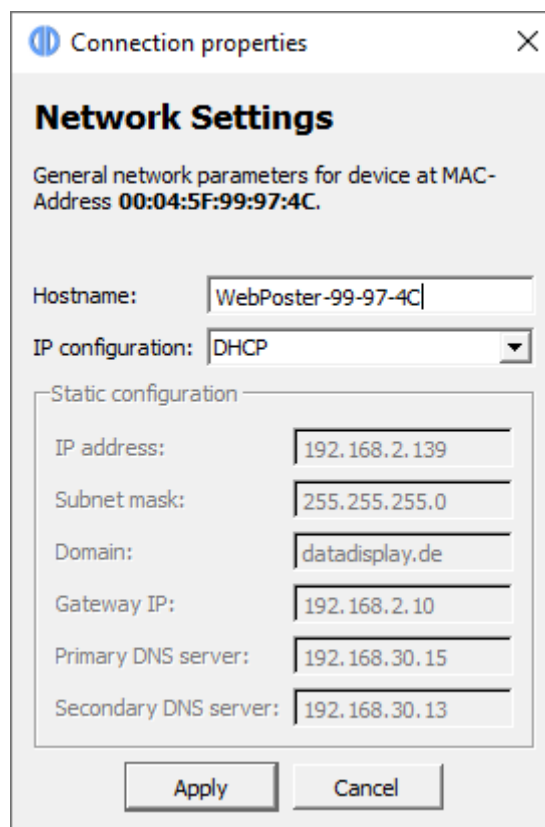
- The Windows PC and the WebPoster-IQ must be connected to the same network

### 4.3 Network Setup of WebPoster-IQ via Artista Device Finder

- Make sure that WebPoster-IQ is powered on and connected to the same network as the Windows PC
- Start the software Artista Device Finder on the Windows PC
- Press the button **Scan / Refresh** to scan the network for available WebPoster-IQ devices



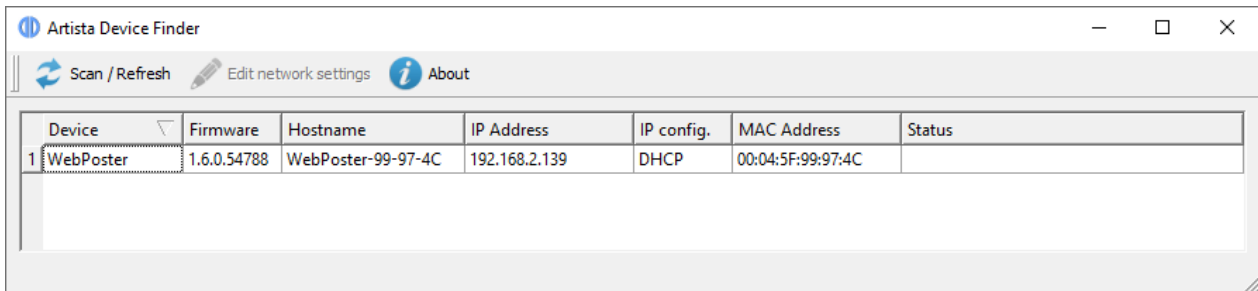
- Double-click the device to edit the network parameters as required



- Press the button **Apply** and enter the **Username** and **Password** of WebPoster-IQ to save the new network parameters on the device. The default login parameters can be found in section Factory Settings of WebPoster-IQ

#### 4.4 Device Setup of WebPoster-IQ via Web Interface

- Use the Artista Device Finder, to open the Web Interface of WebPoster-IQ for further configuration. To do so, right-click on the device and select the context menu **Open in web browser**. Your standard Browser opens with the IP address of the WebPoster-IQ and a login dialog appears



The screenshot shows the 'Artista Device Finder' application window. It has a title bar with standard window controls and a toolbar with 'Scan / Refresh', 'Edit network settings', and 'About' buttons. Below the toolbar is a table with the following data:

Device	Firmware	Hostname	IP Address	IP config.	MAC Address	Status
1 WebPoster	1.6.0.54788	WebPoster-99-97-4C	192.168.2.139	DHCP	00:04:5F:99:97:4C	

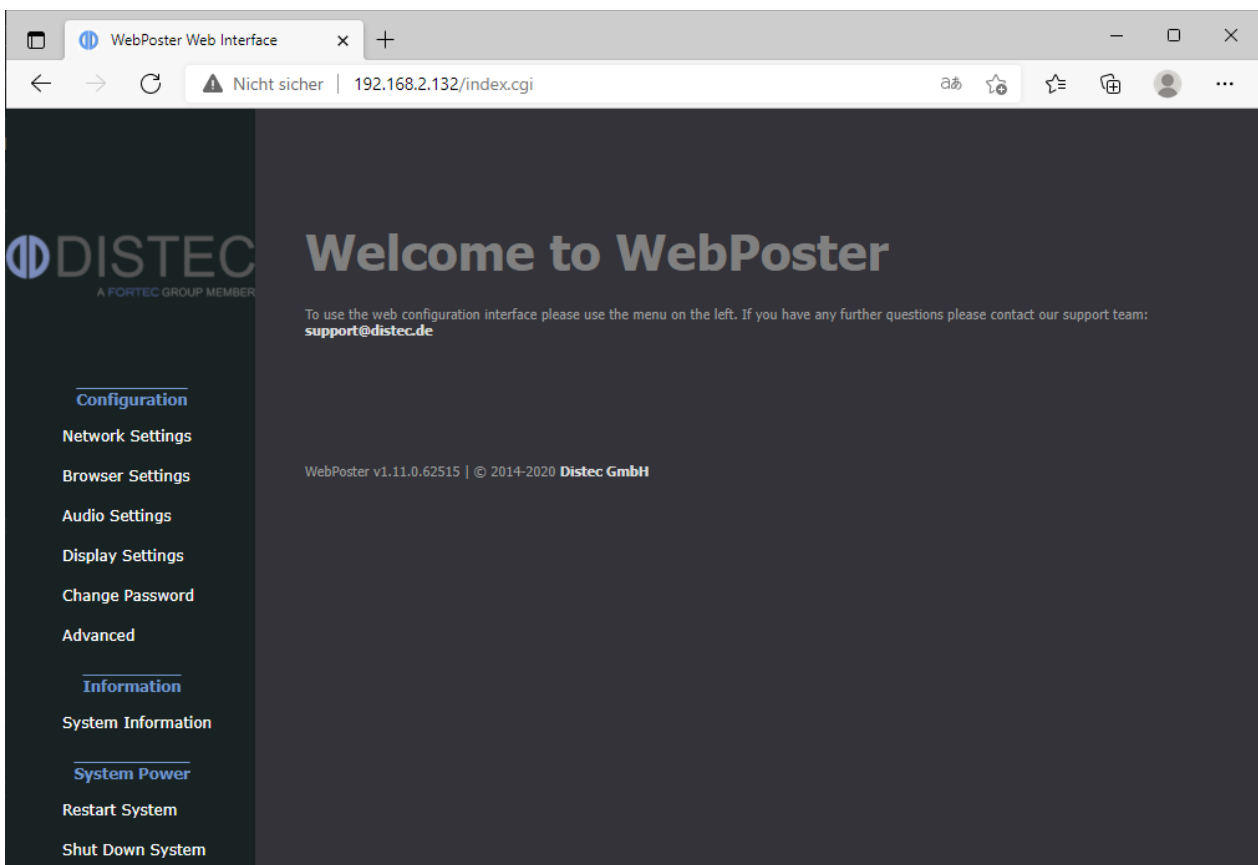
- Log in to the Web Interface with the default login parameters (see section Factory Settings of WebPoster-IQ)
- Select the menu **Browser Settings** and enter the URL of the web site that should be displayed on the WebPoster-IQ screen and the **Reload Interval** if necessary. See section Browser Settings for more details
- Select the menu **Display Settings** to select the display orientation **Portrait**, if required. See section Display Settings for more details
- Select the menu **Change Password** to set your own password. See section Password Settings for more details

Now your WebPoster-IQ monitor is ready to use.



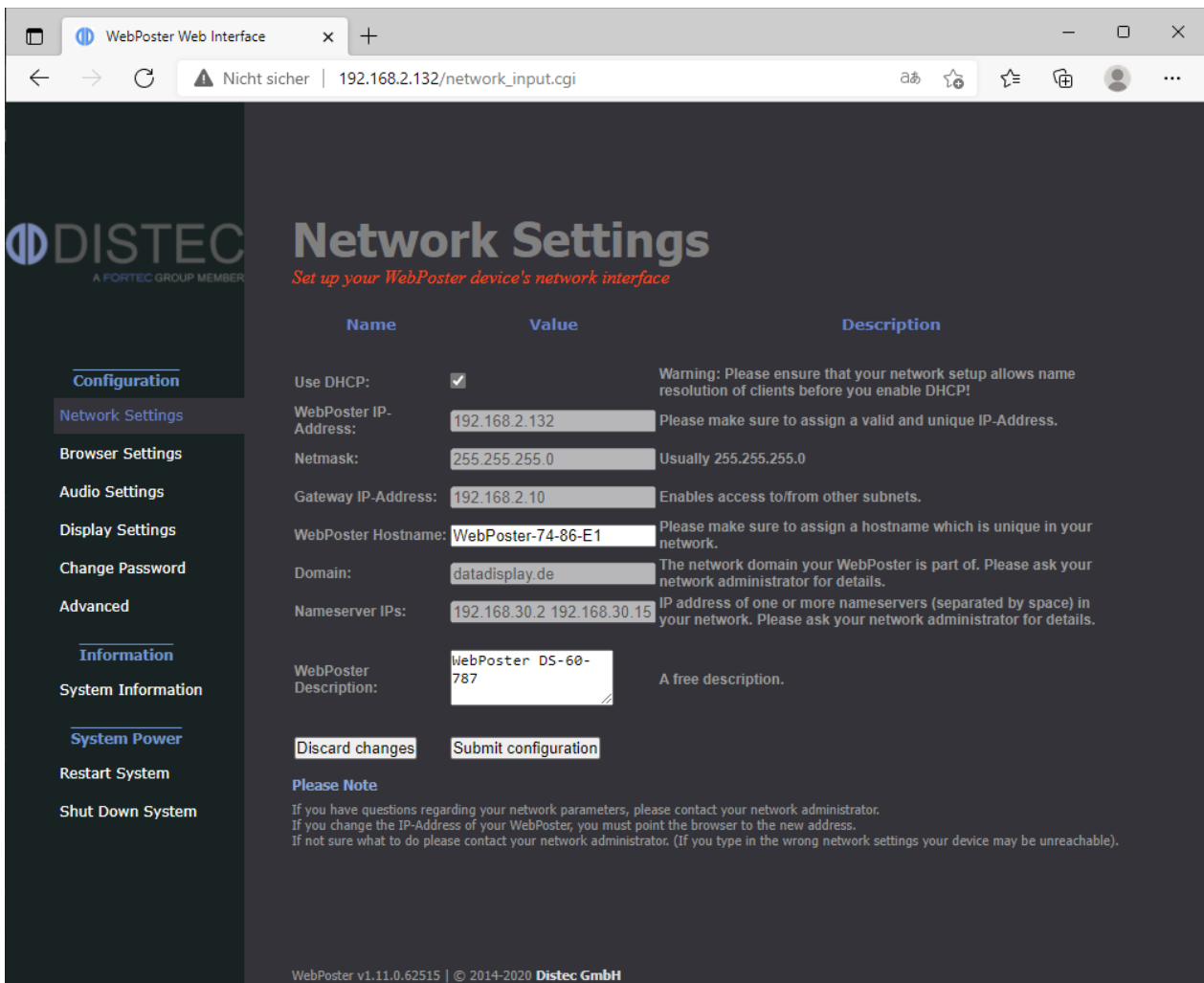
## 5 WebPoster-IQ Configuration via Web Interface

The WebPoster-IQ configuration interface can be accessed with any common web browser like Firefox, Chrome, Internet Explorer, and many others. You can establish the connection by using the Windows software Artista Device Finder or by typing the IP address of your device into the browser manually. The current IP address of WebPoster-IQ is displayed on the screen during the system start after power on. When you are asked for the device password, use the stored password (for the default password see the section Factory Settings of WebPoster-IQ).



## 5.1 Network Settings

This is the menu to change the settings of the network interface of WebPoster-IQ.



### Discard changes:

Use this button to reset all input fields. This will have no effect on the actual configuration settings - only the form inputs will be cleared.

### Submit configuration:

Use this button to apply and save the settings entered.  
After submitting the new configuration, WebPoster-IQ restarts automatically.

## 5.1.1 Using DHCP

To use DHCP for network configuration, tick the **Use DHCP** checkbox. If the device should be reachable by its hostname, the DHCP server must be able to pass hostnames to the DNS. The default hostname of WebPoster-IQ has the following format: WebPoster-xx-xx-xx (WebPoster- followed by the last 3 bytes of its MAC address), but can be set to something more descriptive if needed. The network settings will be displayed on the splash screen shown during start-up of the device.

If DHCP setup fails, the device's network will be configured with its default settings (see section Factory Settings of WebPoster-IQ for more details).

## 5.1.2 Using Static IP Addresses

To use a static network configuration for WebPoster-IQ, disable the **Use DHCP** checkbox. In this mode the following network parameters can be set manually:

- IP address of WebPoster-IQ
- Netmask
- IP address of the Gateway
- Hostname of WebPoster-IQ
- Domain
- IP address of the Nameserver (one or more Nameserver addresses separated by space)

When using a static IP address, it must be assured that this address is not used by any other device connected to the network. Please contact your network administrator for details and configuration parameters.

## 5.2 Browser Settings

This is the menu to configure the integrated Web Browser of WebPoster-IQ.

### Home Page:

Set the address (URL) of the web page to be shown in full screen mode on the display.

### Reload Interval:

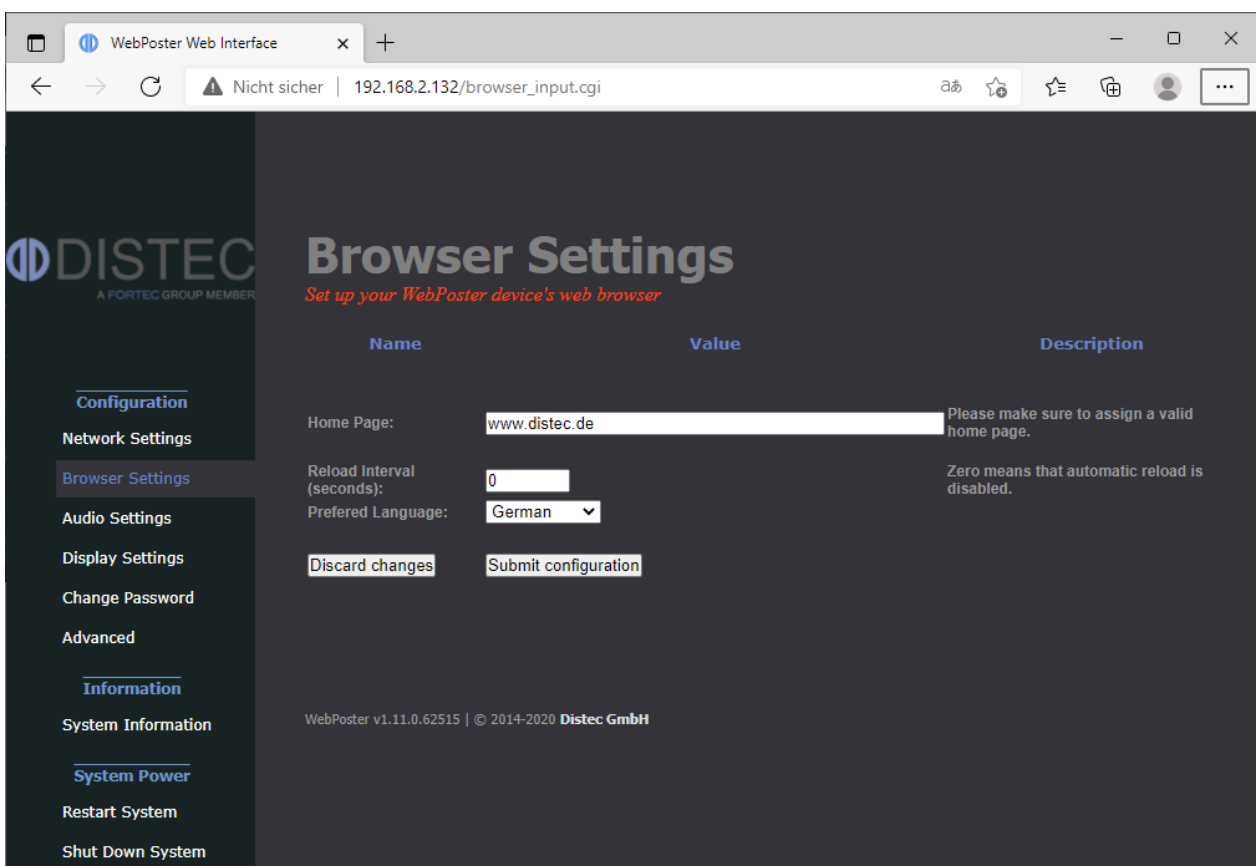
If the content of the web page changes from time to time and the web page doesn't support content update in the browser directly, WebPoster-IQ can be configured to reload the web page periodically. The interval can be set in seconds. To disable the reload function, the interval must be set to **0**.

### Discard changes:

Use this button to reset all input fields. This will have no effect on the actual configuration settings - only the form inputs will be cleared.

### Submit configuration:

Apply and save the settings above.



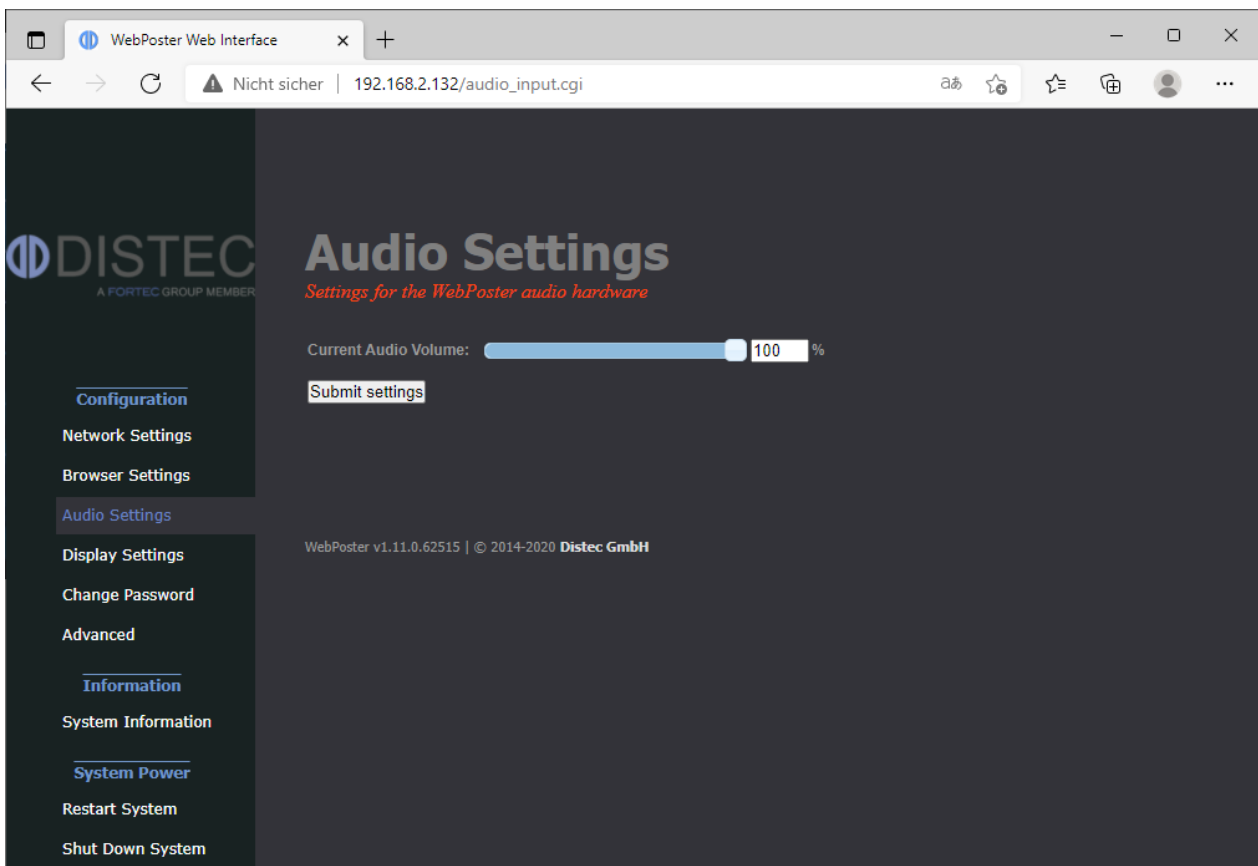
## 5.3 Audio Settings

This page can be used to set the volume level for audio playback between 0% and 100%.

For the POS-Line IQ Atom monitor series, this function is only available, if the speaker DS-91-622 is connected via USB.

### Submit settings:

Apply and save the selected audio volume.



## 5.4 Display Settings

This page can be used to configure the orientation of the content on the screen.

### Landscape:

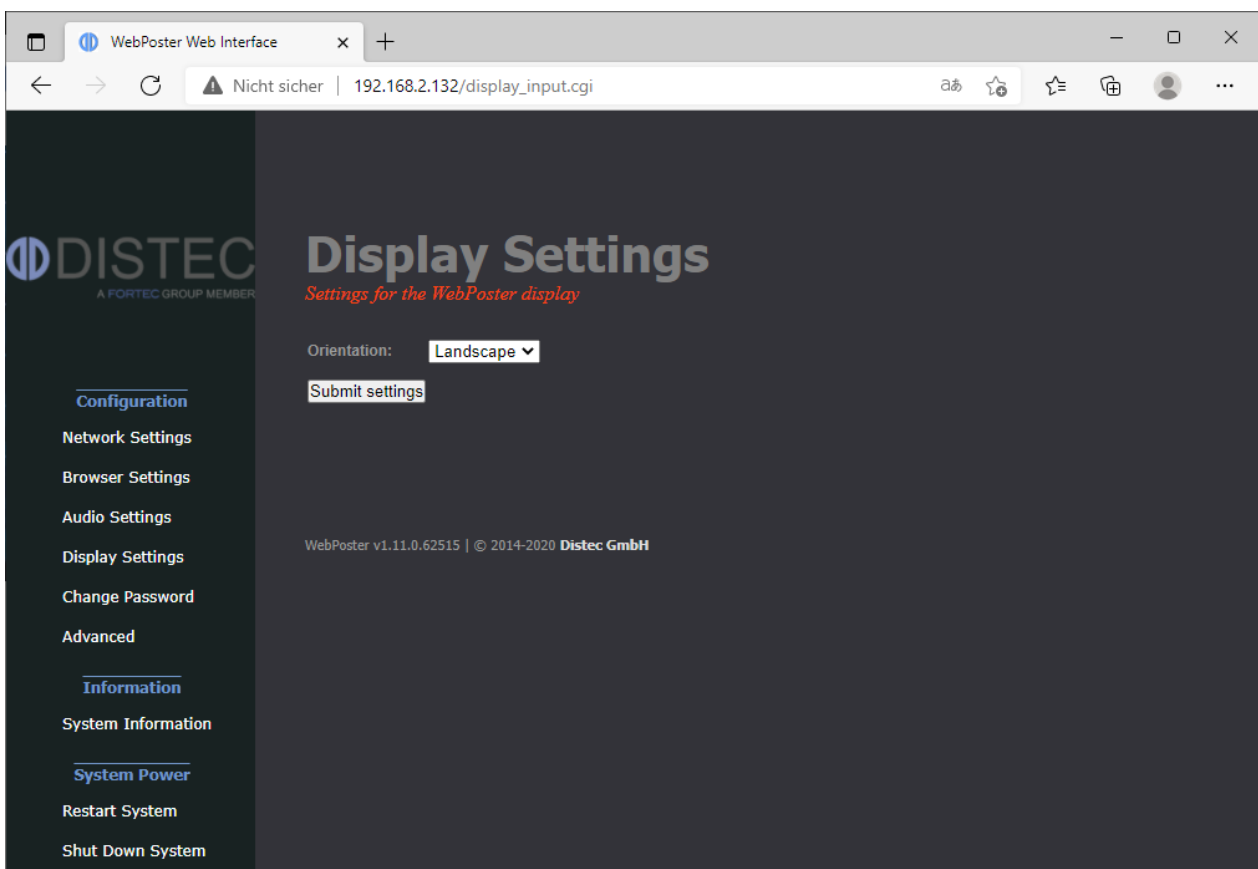
The content is shown on the display in landscape mode (default).

### Portrait:

The content is shown on the display in portrait mode (rotated 90° counterclockwise).

### Submit settings:

Apply and save the display orientation.



## 5.5 Password Settings

This is the menu to change the password of WebPoster-IQ. This password is required to access the device with Artista Device Finder and with this Web Interface.

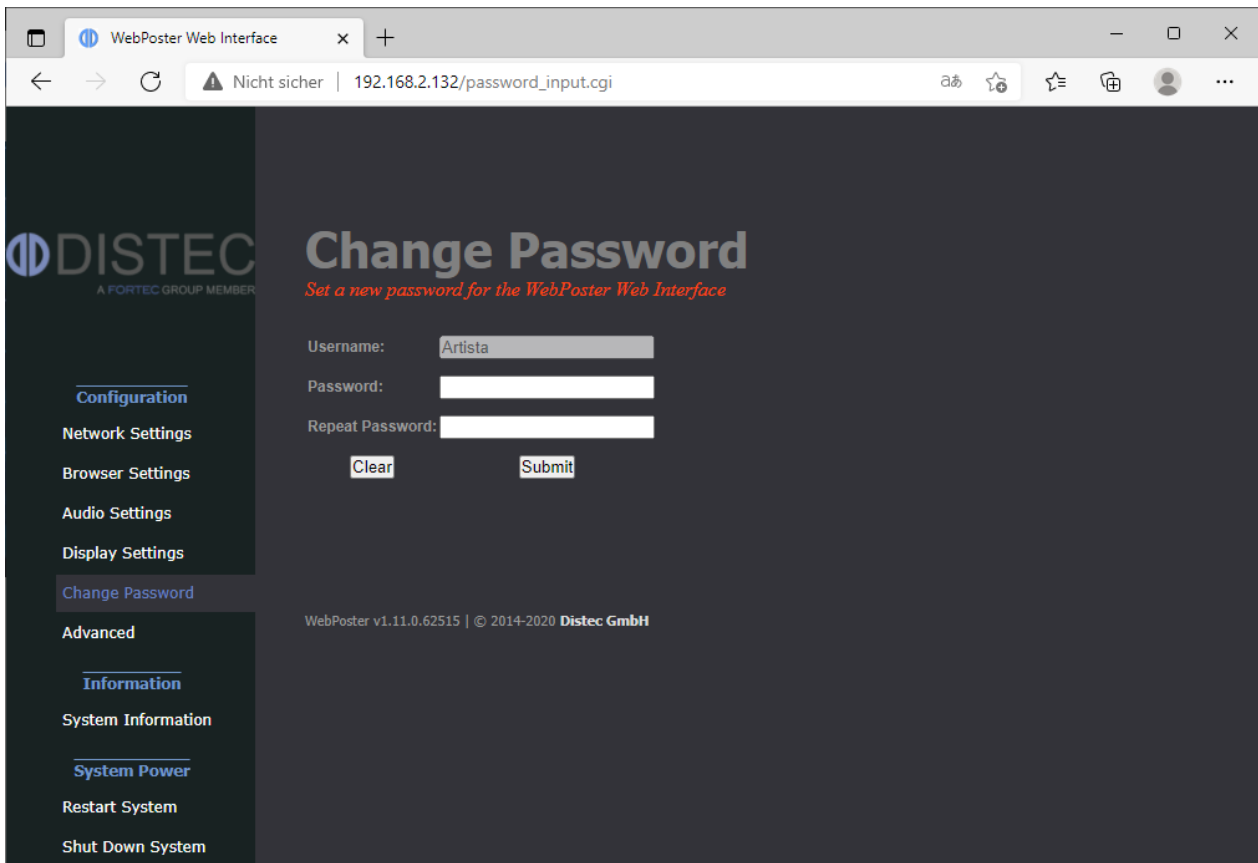
The Username is not configurable. The new password must be entered twice to prevent the device from being inaccessible due to typing errors.

### Clear:

Use this button to reset the form data. This will have no effect on the actual password setting - only the form inputs will be cleared.

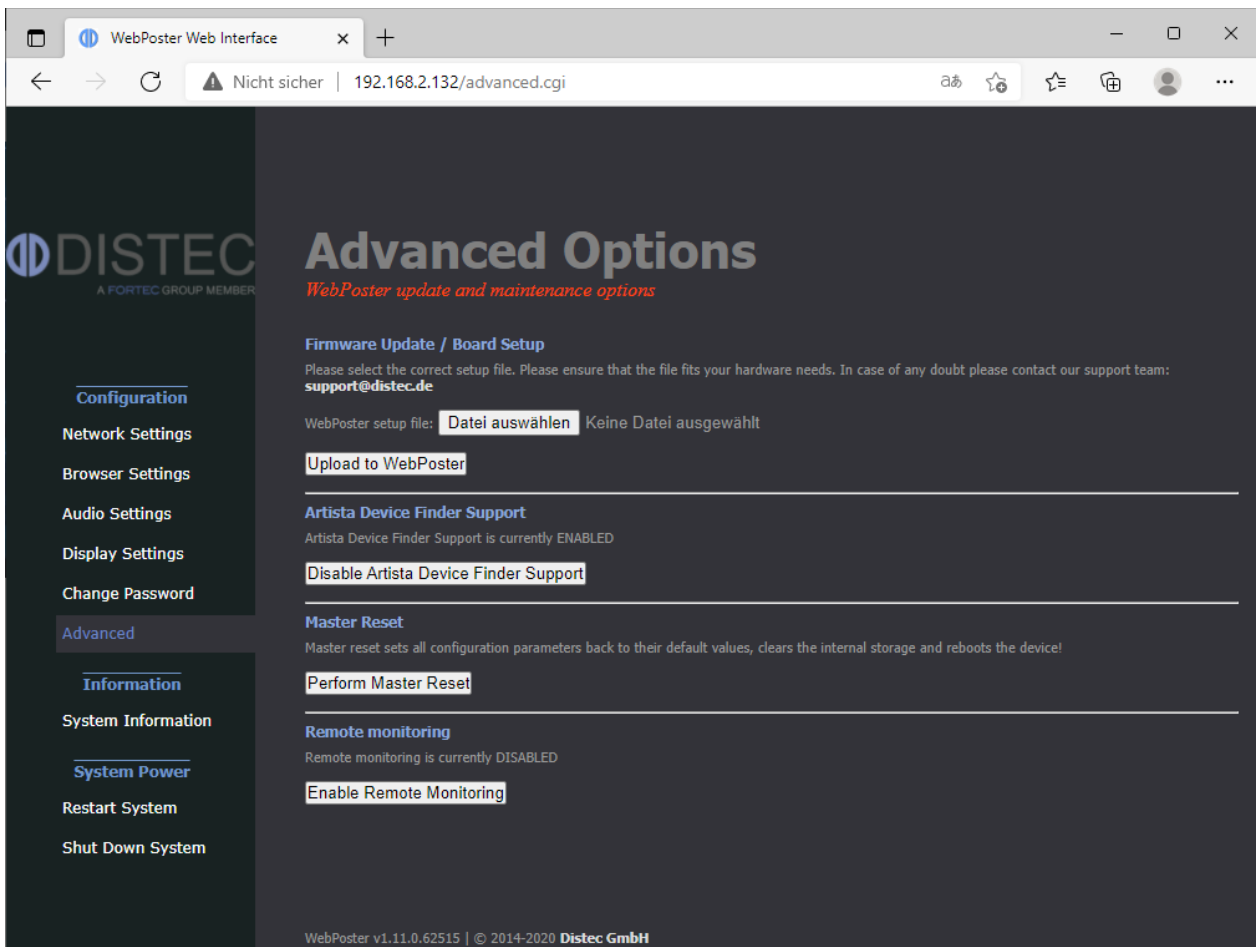
### Submit:

By pressing this button, the new password will be activated and you will have to re-login on changing to any other page of the web interface.



## 5.6 Advanced Options

This is the menu to update the WebPoster-IQ firmware or reset the device to the factory settings.



### 5.6.1 Firmware Update / Board Setup

This function can be used to apply a firmware update or setup packages to WebPoster-IQ.

Please contact your sales contact person in the FORTEC Group to get the required file.

To check information about your device, select **System Information** from the menu on the left. Please make sure that the firmware update or setup file you are going to install is compatible with your hardware.

Click the **Browse** button and then choose the correct firmware update or setup file. Then press the button **Upload to WebPoster** to upload and install the software on the device.

**Warning:**  
**Do not power off your device while the update process is running!**  
**This can damage the hardware!**



### 5.6.2 Artista Device Finder Support

Here you can enable or disable support for the Artista Device Finder tool. If enabled (default), network configuration can be done remotely from a PC connected to the same **physical** network (for browser access, the PC and the device have to be in the same subnet, for Artista Device Finder this is not mandatory). Please see the Artista Device Finder manual for more information.

### 5.6.3 Master Reset

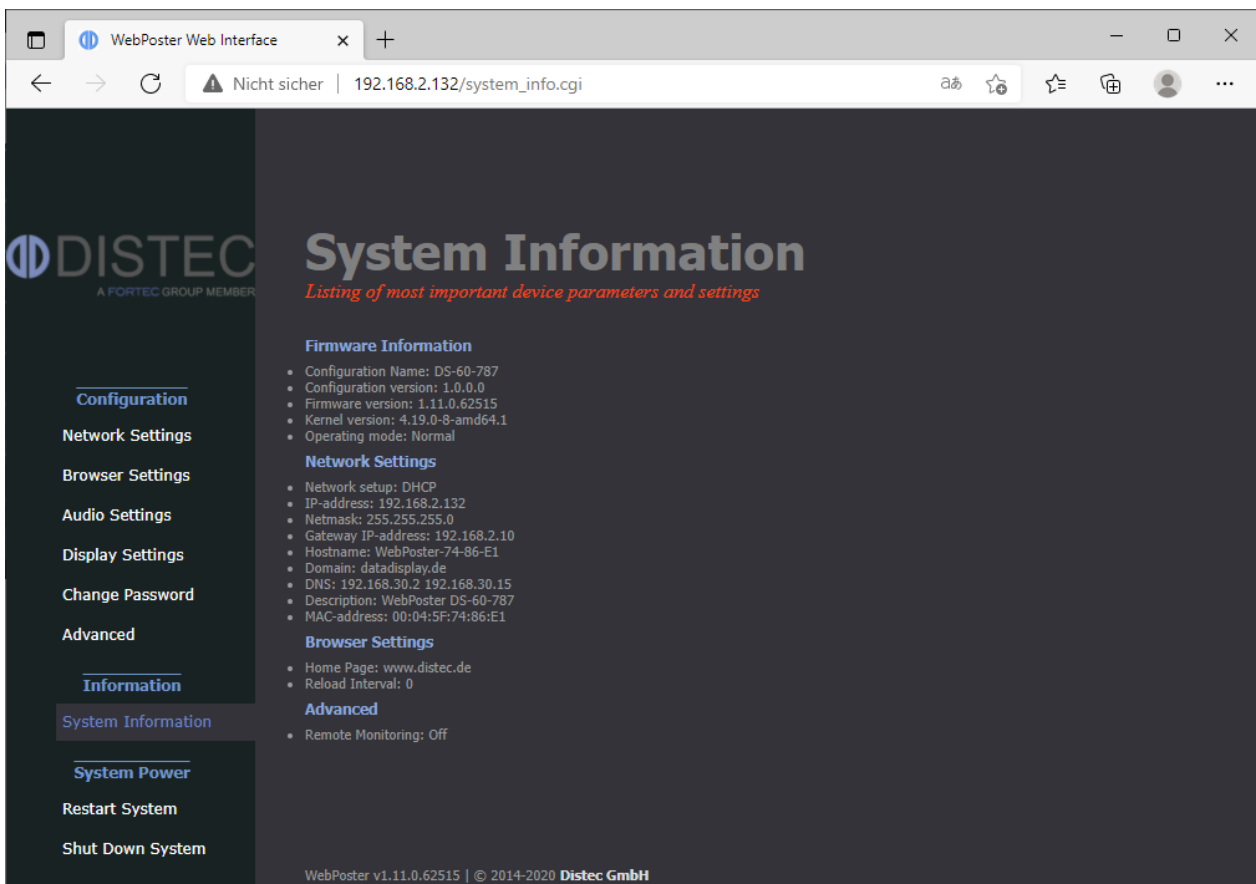
Master reset sets all configuration parameters of WebPoster-IQ back to their factory default values and reboots the device!

Click **Perform Master Reset** to execute this function and wait until WebPoster-IQ has restarted.

## 5.7 System Information

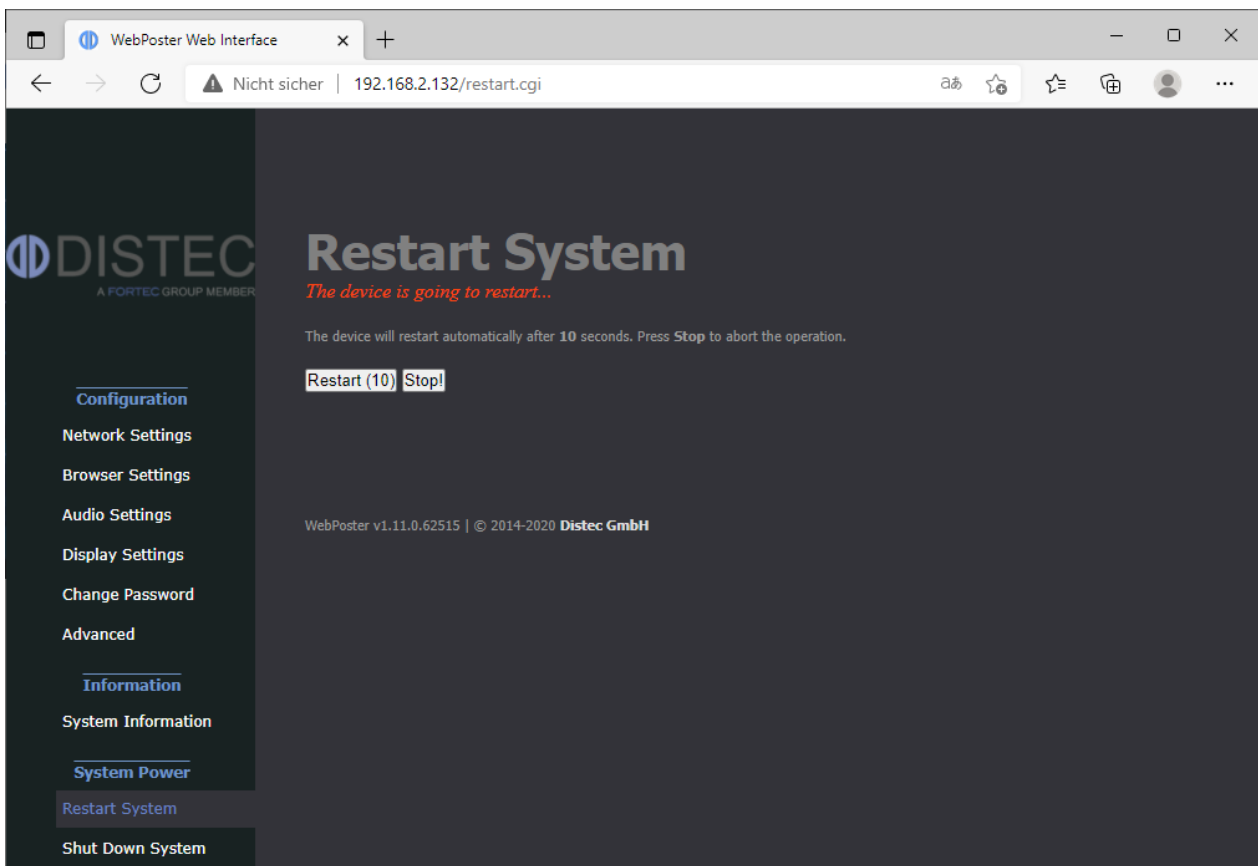
This is the menu to get all system information of WebPoster-IQ with one click.

In case of a technical question or problem, please add this information to your support request.



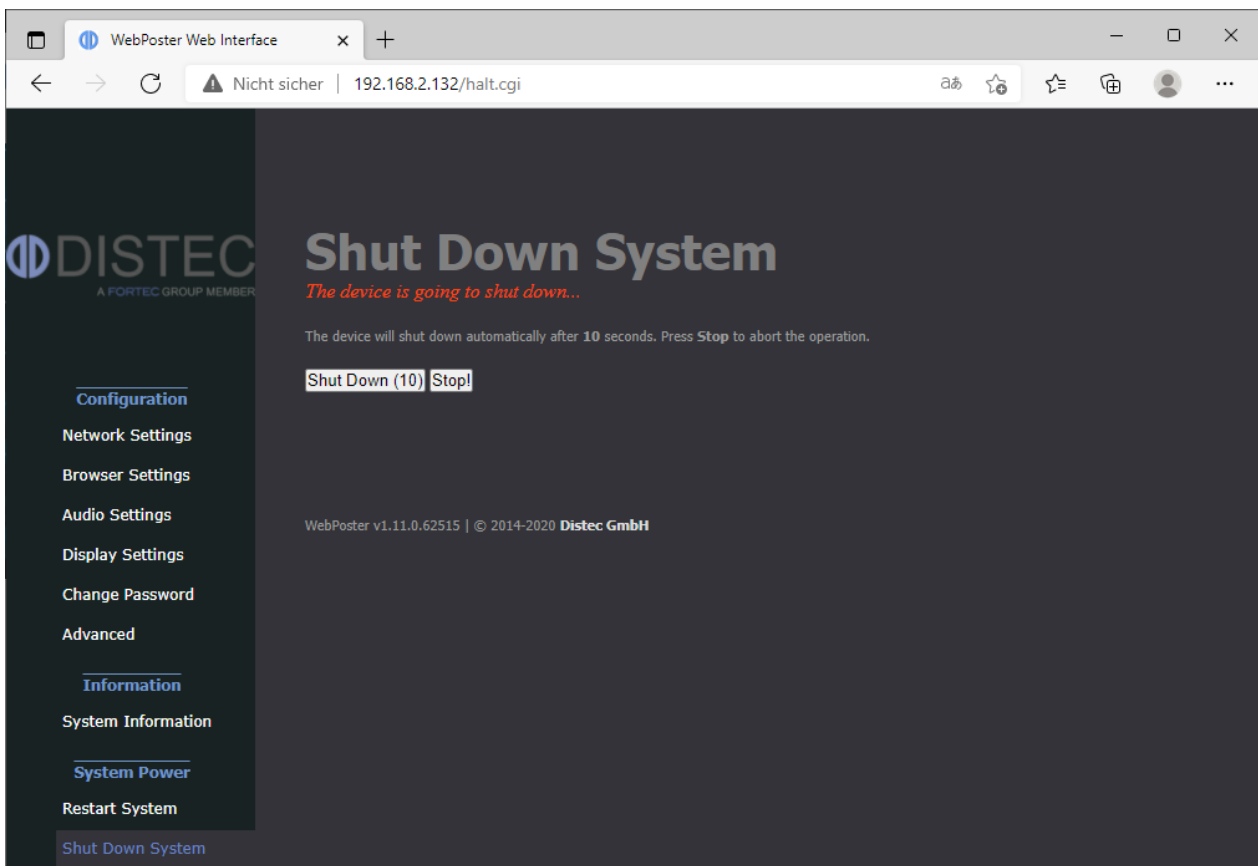
## 5.8 Restart System

In some cases it might be necessary to restart WebPoster-IQ. The device will automatically restart in 10 seconds, but can also be restarted immediately by clicking the **Restart** button. Press **Stop** if you got on this page by mistake and don't need to restart the device.



## 5.9 Shut Down System

This function can be used to shut down WebPoster-IQ. The device automatically shuts down after 10 seconds, but this can also be done immediately by clicking the **Shut Down** button. Press **Stop** if you got on this page by mistake and don't need to shut down the device. To start WebPoster-IQ again, it must be powered on again.



## 6 Factory Settings of WebPoster-IQ

This section shows all factory settings of WebPoster-IQ. WebPoster-IQ can be reset to these values by using the **Master Reset** in the Web Interface (see section Master Reset for details).

### Default Network Configuration:

Parameter	Default Value	Notes
DHCP	Enabled	
IP Address	192.168.0.1	Default IP address, if no DHCP server is available
Netmask	255.255.255.0	Default netmask, if no DHCP server is available
Hostname	WebPoster-xx-xx-xx	xx-xx-xx represents the last 6 bytes of the device's MAC address

### Default Login Data:

This login data is required for Artista Device Finder and the Web Interface.

Parameter	Default Value	Notes
Username	Artista	Not configurable
Password	Artista	

### Default Browser Configuration:

Parameter	Default Value	Notes
Web Page URL	<a href="http://www.distec.de/">http://www.distec.de/</a>	
Auto reload	0	Auto reload disabled

## 7 Technical Specification

Hardware Requirement	Distec Monitor Series	POS-Line IQ Atom
		POS-Line BLO IQ Atom
		BLO-Line IQ Atom
		POS-Line IQ Ontario (legacy product)
Operating System	Embedded Linux	Based on Debian 10 (Buster)
	Kernel	Version 4.19.0-8-amd64.1
Integrated Browser	Firefox	Version 68.5.0 ESR
	HTML5	Yes
	JavaScript	Yes
Display	Resolution	1024 x 768
		1280 x 1024
		1920 x 1080
Network	Ethernet 10/100/1000	1x
	Wi-Fi	Not supported
	2G GSM	Not supported
	3G UMTS	Not supported
	4G LTE	Not supported
USB	USB 2.0 Host	1x (POS-Line IQ Atom, POS-Line IQ BLO, BLO-Line IQ) 4x (POS-Line IQ Ontario)
	USB 3.0 Host	1x (POS-Line IQ Atom, POS-Line IQ BLO, BLO-Line IQ)
Audio	USB Speaker	1x DS-91-622 (POS-Line IQ Atom only)
	Stereo Line Out	1x (POS-Line IQ Ontario only)
HDMI	Output	1x (to clone content on a second display)
Input Devices	Keyboard	Not supported
	Mouse	Not supported
	Touch Screen	Not supported

## 8 Order Numbers

### 8.1 WebPoster-IQ Firmware

The WebPoster-IQ firmware must be ordered as option together with the POS-Line IQ Atom, POS-Line IQ BLO or BLO-Line IQ monitor.

Part #	Description	Comment
DS-60-787	WebPoster-IQ for IQ Atom	Firmware option for the Distec monitors listed below

### 8.2 Distec POS-Line IQ Atom Monitor Series

The table below lists all available POS-Line IQ Atom Open Frame monitors supported by WebPoster-IQ. For detailed information about the hardware and available options like front bezels, protective glasses, etc., please contact your sales contact person in the FORTEC Group.

Part #	Description	Display Size	Display Resolution
DS-91-765	POS-Line V2 / 15,0" IQ Atom	15,0"	1024 x 768
DS-91-802	POS-Line V2 / 15,6" IQ Atom	15,6"	1920 x 1080
DS-91-770	POS-Line V2 / 17,0" IQ Atom	17,0"	1280 x 1024
DS-91-775	POS-Line V2 / 17,3" IQ Atom	17,3"	1920 x 1080
DS-91-780	POS-Line V2 / 19,0" IQ Atom	19,0"	1280 x 1024
DS-91-785	POS-Line V2 / 21,5" IQ Atom	21,5"	1920 x 1080
DS-91-739	POS-Line V2 / 24,0" IQ Atom	24,0"	1920 x 1080
DS-91-931	POS-Line 31,5 IQ Atom	31,5"	1920 x 1080
DS-91-932	POS-Line 42 IQ Atom	42,0"	1920 x 1080
DS-91-933	POS-Line 46 IQ Atom	46,0"	1920 x 1080
DS-91-934	POS-Line 54,6 IQ Atom	54,6"	1920 x 1080
DS-91-959	POS-Line 65 IQ Atom	65,0"	1920 x 1080

### 8.3 Distec POS-Line BLO IQ Atom Monitor Series

The table below lists all available POS-Line IQ BLO monitors supported by WebPoster-IQ. For detailed information about the hardware and available options, please contact your sales contact person in the FORTEC Group.

Part #	Description	Display Size	Display Resolution
DS-91-965	POS-Line 31,5 IQ BLO	31,5"	1920 x 1080
DS-91-966	POS-Line 42 IQ BLO	42,0"	1920 x 1080
DS-91-967	POS-Line 46 IQ BLO	46,0"	1920 x 1080
DS-91-968	POS-Line 54,6 IQ BLO	54,6"	1920 x 1080

## 8.4 Distec BLO-Line IQ Atom Monitor Series

The table below lists all available BLO-Line IQ monitors supported by WebPoster-IQ. For detailed information about the hardware and available options, please contact your sales contact person in the FORTEC Group.

Part #	Description	Display Size	Display Resolution
DS-92-051	BLO-Line 24 IQ	24,0"	1920 x 1080
DS-92-052	BLO-Line 31,5 IQ	31,5"	1920 x 1080
DS-92-053	BLO-Line 42 IQ	42,0"	1920 x 1080
DS-92-054	BLO-Line 46 IQ	46,0"	1920 x 1080
DS-92-055	BLO-Line 54,6 IQ	54,6"	1920 x 1080
DS-92-056	BLO-Line 65 IQ	65,0"	1920 x 1080

## 8.5 USB Speaker

Part #	Description	Comment
DS-91-622	Option Speaker POS-Line 32"-65"	Audio option for POS-Line IQ Atom



Our company network supports you worldwide with offices in Germany, Austria, Switzerland, the UK and the USA. For more information please contact:

## Headquarters

Germany



**FORTEC Elektronik AG**

Augsburger Str. 2b  
82110 Germering

Phone: +49 89 894450-0  
E-Mail: [info@forteca.de](mailto:info@forteca.de)  
Internet: [www.forteca.de](http://www.forteca.de)

## Fortec Group Members

Austria



**Distec GmbH Office Vienna**

Nuschingasse 12  
1230 Wien

Phone: +43 1 8673492-0  
E-Mail: [info@distec.de](mailto:info@distec.de)  
Internet: [www.distec.de](http://www.distec.de)

Germany



**Distec GmbH**

Augsburger Str. 2b  
82110 Germering

Phone: +49 89 894363-0  
E-Mail: [info@distec.de](mailto:info@distec.de)  
Internet: [www.distec.de](http://www.distec.de)

Switzerland



**ALTRAC AG**

Bahnhofstraße 3  
5436 Würenlos

Phone: +41 44 7446111  
E-Mail: [info@altrac.ch](mailto:info@altrac.ch)  
Internet: [www.altrac.ch](http://www.altrac.ch)

United Kingdom



**Display Technology Ltd.**

Osprey House, 1 Osprey Court  
Hinchingbrooke Business Park  
Huntingdon, Cambridgeshire, PE29 6FN

Phone: +44 1480 411600  
E-Mail: [info@displaytechnology.co.uk](mailto:info@displaytechnology.co.uk)  
Internet: [www.displaytechnology.co.uk](http://www.displaytechnology.co.uk)

USA



**Apollo Display Technologies, Corp.**

87 Raynor Avenue, Unit 1  
Ronkonkoma, NY 11779

Phone: +1 631 5804360  
E-Mail: [info@apolloDisplays.com](mailto:info@apolloDisplays.com)  
Internet: [www.apolloDisplays.com](http://www.apolloDisplays.com)